



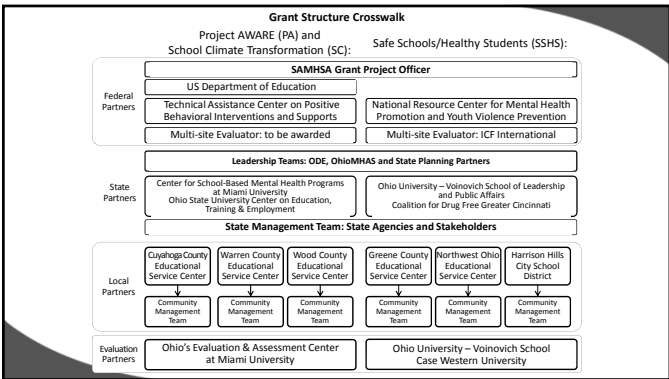
2015 OSPA Spring Conference
Dr. Sue Zake, Director Office for Exceptional Children
Dr. Amity Noltemeyer
Dr. Michael Petrasek

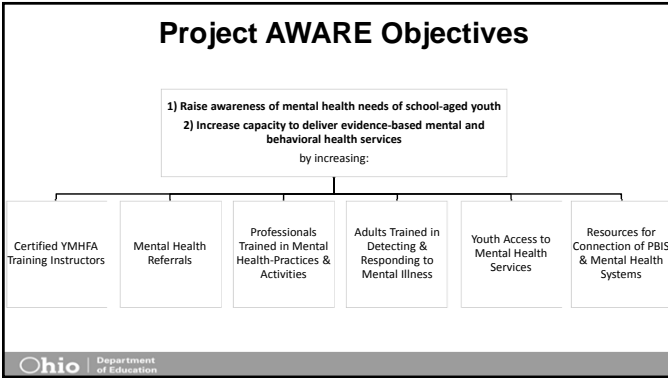
Ohio | Department of Education



Project AWARE

Ohio | Department of Education





OHIO Mental Health
Network for School Success

Kathleen M. Oberlin, Director
oberlink2@gmail.com

Center for School-Based Mental Health PROGRAMS

Dr. Cricket Meehan, Director
meehandc@miamioh.edu

Ohio Mental Health Network for School Success (OMHNSS)

- Helps Ohio's schools, community-based agencies, and families work together to achieve improved educational and developmental outcomes for all children
- Consists of mental health affiliates, universities, and effective practice programs
- The coordinating agency is the Center for School-Based Mental Health Programs (CSBMHP) at Miami University

Ohio | Department of Education

OMHNSS Regions

Mental Health Affiliates

North West
Noelle Duvall
Children's Resource Centers

North East
Susan Bazyk
Cleveland State University

North Central
Bob Conley
D and E Counseling Centers

Central Ohio
Ray Rietz
Consultant

South East
Nina Andrews
Logan Hocking Schools

South West
Sharon Custer
Miami University

YMHA INSTRUCTORS MAP

North East
YMHA Instructor
Susan Bazyk
Becky Mohler

North Central
YMHA Instructor
Anita Williams
Jennifer Hunt


North West
YMHA Instructor
Melanie Vierling
Randy King

Central
YMHA Instructor
Tyrone Boyd


South East
YMHA Instructor
Nina Andrews

South West
YMHA Instructor
Sharon Custer

Statewide - Leads
Kathleen Oberlin
Cricket Meehan
Emily Jordan
Erin Eakin




School and Community
Continuum of Services



a resource directory


- Provides easy access to coordinated safe and supportive school and community services and local links
- Go to <http://continuum.oberlinkconsulting.com/> and click on Ohio

Select a County in Ohio



Treatment	Intervention	Prevention
Diagnostic Assessment	Family Outreach	Parent Advocacy
Liaison/Case Management (CPST)	Classroom Assistance	Teacher Consultation
Individual/ Family Counseling	Classroom Check-ins	Classroom Presentation
Crisis Intervention	After School	Referrals
Day Treatment	1:1 Supervision/Mentoring	
	Typical Groups	
	Summer Program	

Ohio | Department of Education



YMHFA Training

YOUTH MENTAL HEALTH FIRST AID USA
FOR ADULTS ASSISTING YOUNG PEOPLE

YOUTH MENTAL HEALTH FIRST AID TRAINING

YMHFA Training Session

Are you actively involved with youth? Do you want to help them overcome difficult obstacles, such as mental health problems or substance addiction? Attend this YMHFA training session and learn the 5-step plan to intervening in both crisis and non-crisis cases. The training covers normal adolescent development, common mental health problems (e.g., anxiety, depression, disruptive behavior disorders), and respondent action plans. Sign up today!

For more information on YMHFA, visit <http://www.mentalhealthfirstaid.org/>

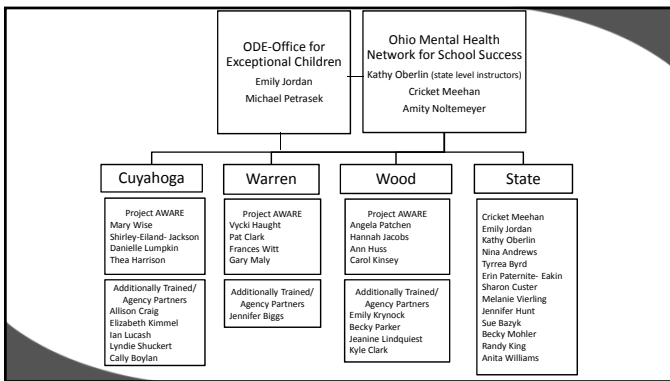
Learn to help youth ages 12-18 with mental health or addiction challenges

Ideal for School Staff, Health and Human Service Workers, Family and Community Members, Juvenile Justice & More!

Receive a Certificate

Take Home a Reference Manual

Ohio | Department of Education



Region/Visit	Date/Time	Location	Lead Instructor/IT
OSST 1/Free State registration Richland County	May 1 & 7, 2015 8am-12pm	1957 W. Longview, Room 208 Mansfield, OH 44808	Yvonne Boyd
W-OSST 2/Free OSST registration Lorain County	June 22, 2015 8am-4:30pm	Ardenhall Senior Observation 611 North Lake Street Newark, OH 44601	Seaton Borch
SE - OSST 3/Free Athens County	June 17 & 18, 2015 8am-12pm	557616 21 1/2 St. Drive Chambers, OH 45719	Steve Andrews
NC-OSST 3/Free State registration Berk County	June 18 & 19, 2015 8am-12pm	80 Grange Corner Technical Center 2800 Richter Drive S.E. Mansfield, OH 44860-9880 330-832-9856	Jennifer Hunt
NC - OSST 4/Free Lorain County	September 4, 2015 8am-4:30pm	Samuel Cox, ESQ 420 Washington Avenue Cuyahoga Falls, OH 44221	Ardis Williams
NC-OSST 4/Free OSST registration Mahoning County	August 17 & 18, 2015 8am-12pm	Mahoning C. ESQ Room 10 100 Mahoning Drive, Suite 220 Youngstown, OH 44512	Jennifer Hunt
SW-OSST 13/Free OSST registration Hamilton County	September 1, 2015 8am-4:30pm	Hamilton County ESQ 11000 Hamilton Avenue Cincinnati, OH 45231	Sharon Carter
OS-OSST Madison County	TBA		Emily Jordan
Madison County	TBA		Yvonne Boyd

Information Briefs

INTERCONNECTED SYSTEMS FRAMEWORK (ISF)

Interconnected Systems Framework (ISF) provides a comprehensive overview of the ISF framework, including the ISF framework, the ISF framework, and the ISF framework.

SCHOOL MENTAL HEALTH (SMH)

School Mental Health (SMH) provides a comprehensive overview of the SMH framework, including the SMH framework, the SMH framework, and the SMH framework.

POSITIVE BEHAVIORAL INTERVENTIONS & SUPPORTS (PBIS)

Positive Behavioral Interventions and Supports (PBIS) provides a comprehensive overview of the PBIS framework, including the PBIS framework, the PBIS framework, and the PBIS framework.

INTERCONNECTED SYSTEMS FRAMEWORK (ISF)

Interconnected Systems Framework (ISF) provides a comprehensive overview of the ISF framework, including the ISF framework, the ISF framework, and the ISF framework.

POSITIVE BEHAVIORAL INTERVENTIONS & SUPPORTS (PBIS)

Positive Behavioral Interventions and Supports (PBIS) provides a comprehensive overview of the PBIS framework, including the PBIS framework, the PBIS framework, and the PBIS framework.

INTERCONNECTED SYSTEMS FRAMEWORK (ISF)

Interconnected Systems Framework (ISF) provides a comprehensive overview of the ISF framework, including the ISF framework, the ISF framework, and the ISF framework.

SCHOOL MENTAL HEALTH (SMH)

School Mental Health (SMH) provides a comprehensive overview of the SMH framework, including the SMH framework, the SMH framework, and the SMH framework.

POSITIVE BEHAVIORAL INTERVENTIONS & SUPPORTS (PBIS)

Positive Behavioral Interventions and Supports (PBIS) provides a comprehensive overview of the PBIS framework, including the PBIS framework, the PBIS framework, and the PBIS framework.

Ohio Department of Education

Screening and Evaluation Compendium

MENTAL HEALTH, SOCIAL, EMOTIONAL, AND BEHAVIORAL SCREENING COMPENDIUM

MENTAL HEALTH, SOCIAL, EMOTIONAL, AND BEHAVIORAL SCREENING COMPENDIUM

Comparison of Select Screening Tools

Instrument	Author/Year	Description	Target Population	Length	Other
Student Risk Screening Scale (SRSS)	Drummond et al. (2004)	Screening tool for signs of emotional and behavioral problems in students. The SRSS is used to identify students who may be at risk for emotional and behavioral problems.	Students	10 minutes	Available in English and Spanish
Behavioral Assessment System for Schools (BASS)	McIntyre et al. (2004)	Screening tool for signs of emotional and behavioral problems in students. The BASS is used to identify students who may be at risk for emotional and behavioral problems.	Students	10 minutes	Available in English and Spanish
Behavioral Assessment System for Schools (BASS)	McIntyre et al. (2004)	Screening tool for signs of emotional and behavioral problems in students. The BASS is used to identify students who may be at risk for emotional and behavioral problems.	Students	10 minutes	Available in English and Spanish
Behavioral Assessment System for Schools (BASS)	McIntyre et al. (2004)	Screening tool for signs of emotional and behavioral problems in students. The BASS is used to identify students who may be at risk for emotional and behavioral problems.	Students	10 minutes	Available in English and Spanish

Student Risk Screening Scale (SRSS, Drummond, 2004)

Screening tool for signs of emotional and behavioral problems in students. The SRSS is used to identify students who may be at risk for emotional and behavioral problems.

Target Population: Students

Length: 10 minutes

Other: Available in English and Spanish

Ohio Department of Education

New PBIS Assessment Tool

- School-wide PBIS (SWPBIS) Tiered Fidelity Inventory – Version 2.1 *OSEP Technical Assistance Center, www.pbis.org*
- Measure of adult implementation of PBIS

Tiered Fidelity Inventory (TFI)

- Improved version of previous PBIS assessment tools
- Primary tool for future use with Ohio PBIS – other tools still can be used
- Preferred tool for Ohio PBIS Recognition System

Tiered Fidelity Inventory (Continued)

- Measures fidelity of implementation at each Tier (I, II, III)
- Ratings at each Tier can be measured separately or combined
- Ideally should be completed with an external PBIS coach (may be an SST staff or neighboring school district PBIS staff) “Coach” uses Walkthrough Tool prior to meeting

Tiered Fidelity Inventory (Continued)

- Generally need 80% implementation to affect student progress
- Action Plan Form accompanies TFI
- Paper and pencil or electronic – strongly encourage entry on **PBISApps** found at <https://www.pbisapps.org/Pages/Default.aspx>

PBISApps

- <https://www.pbisapps.org/Pages/Default.aspx>
- Data entry for all PBIS assessment measures *and*
- SWIS (School-Wide Information System)



Integrated Related Services

Every Moment Counts

Dr. Sue Bazyk, Cleveland State University

<http://www.everymomentcounts.org>

Ohio | Department of Education

Every Moment Counts Project Emphasizes

1. **Mental health promotion** – in students with and without disabilities and mental health challenges;
2. **Inclusion of students** with disabilities and/or mental health challenges with non-disabled peers (LRE);
3. **Integrating related services in natural school and community contexts** – academic and non-academic;
4. **Collaboration** among all school personnel, community providers and families.

Bazyk, S. (ed.). (2011). *Mental health promotion, prevention, and intervention for children and youth: A guiding framework for occupational therapy*. Publisher: AOTA Press.

Ohio

Model Programs and Toolkits

- Comfortable Calendars
- Refreshing Recess
- Embedded Classroom Strategies
- After School Activities

Building Capacity Materials

- OT For Occupational Therapists
- For School Personnel And Families

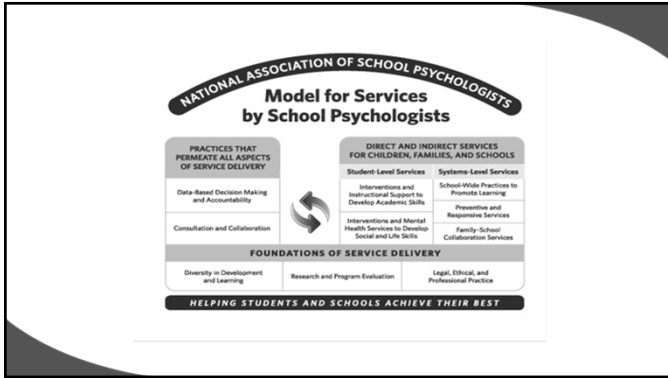
EMBEDDED CLASSROOM STRATEGIES
Students learn deep breathing for stress reduction

Welcome to Every Moment Counts!

Every Moment Counts is a mental health promotion initiative developed to help all children and youth become mentally healthy in order to succeed in school, at home and in the community. This work focuses on reframing mental health as a positive state of functioning – it is more than the absence of mental illness. Positive mental health is associated with feeling good emotionally, doing well functionally, and coping with challenges in everyday life. For children and youth, this means doing well during academic (classroom) as well as nonacademic (recess, lunch, after-school extracurricular activities) times of the school day.

The purpose of this website is share practical resources that can be used by school personnel, children/youth, and families to promote positive mental health and well-being in all children and youth throughout the day.

Suggestions for using this website: Start by reading the information located in the top tabs and then proceed to the side tabs. Developing a knowledge of positive mental health provides the foundation for implementing the model programs and mental health promotion strategies provided in the side tabs.



Diabetes Management

- HB 264 at R.C. 3313.7112(B) = Receive needed diabetes care
- If receive signed medical order: inform parent within 14 days student may be eligible for 504
- Must be permitted to attend school otherwise would attend
- Student must be permitted to perform care in classroom or any other school area

Ohio Department of Education

The screenshot shows the "Diabetes Management" page on the Ohio Department of Education website. The navigation bar at the top includes links for ADMINISTRATORS, TEACHERS, PARENTS, COMMUNITY, TOPICS, HOW DO IT, ABOUT, MEDIA, and CONTACT. The breadcrumb trail reads "Home > Other Resources > Diabetes Management". The main heading is "Diabetes Management". Below it, a text block states: "This legislation (House Bill 264) will give Ohio schools information to train school employees about student diabetes management. Ohio Department of Education (ODE) now shares information to help schools understand their responsibilities. This information will include:". This is followed by a bulleted list: "Guidelines for diabetes management", "Letter discussing diabetes management and 504 plans", "Recommended diabetes training materials", and "Diabetes management survey". A note mentions that additional information about the bill and school requirements will be available in the future, and that additional information will be posted shortly providing additional resources that will help schools maintain good diabetes care for their students. The page is dated "Last Modified: 3/27/2015 4:54:27 PM". A contact information box for Mark Smith (mark.smith@education.ohio.gov) is on the left. The footer features a photo of Dr. Richard A. Ross, Superintendent of Public Instruction, and the Ohio Department of Education contact information (877-644-6338), along with the State Board of Education of Ohio, Tom Garlock, President.



Social Media

facebook Ohio Families and Education
Ohio Teachers' Homeroom

LinkedIn ohio-department-of-education

Storify storify.com/ohioEdDept

twitter @OHEducation

YouTube OhioEdDept

Ohio Department of Education
