


#EachChildOurFuture

Updates from OEC



Joseph Petrarca, Associate Director
Bernadette Laughlin, Education Program Specialist
OSPA November 4, 2021

Ohio Department of Education

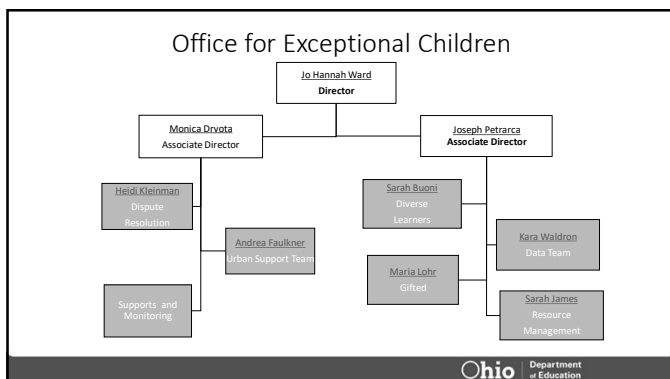
1

Agenda

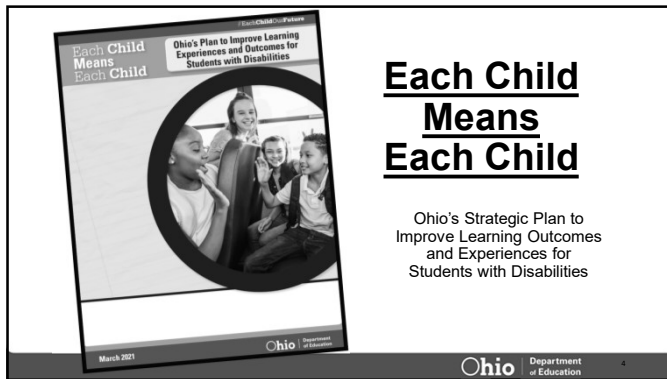
- Welcome and Introductions
- Each Child Means Each Child
- Ohio's Special Education Determination
- Dyslexia Committee Update
- Special Education Indicators
- Clarifications
 - Transfer ETRs
 - Observations
- Related Services Personnel Shortage Update
- Special Education Rules Revision Update

Ohio Department of Education 2

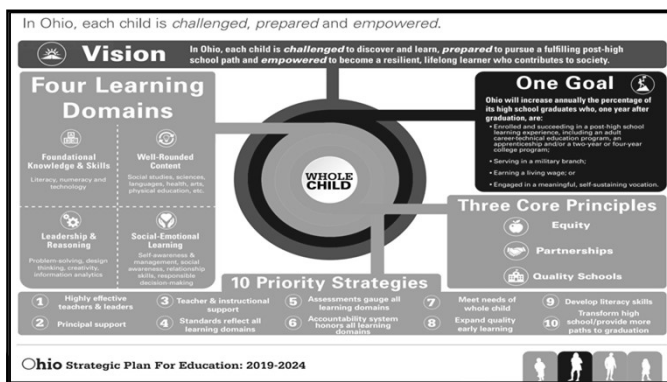
2



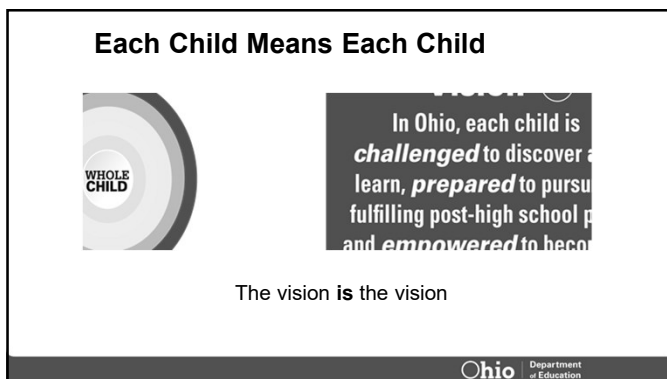
3



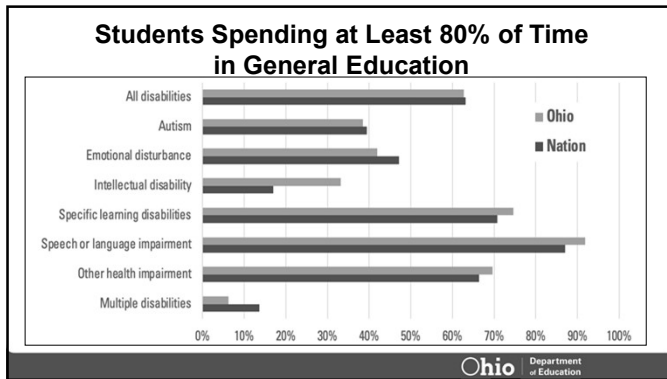
4



5



6



7

Students with Disabilities and Graduation

8

- More than **4,000** students with disabilities drop out each year (that's 1 in 5 students)
- The number of students with disabilities enrolled in career tech has decreased by 1,000

Ohio Department of Education

8

The BIG Picture

- Getting to the problem early
- Building educators' and systemwide capacity
- Educating for living a good life

Ohio Department of Education

9

We Know What Works

We can change how students are taught

We can dismantle ineffective systems

We can create inclusive environments

10

10

Philosophy of Change

- Collective responsibility
- Professional development for general education staff and administrators
- Expectations for students with disabilities
- Preparation for postsecondary setting
- Commitment to continuous improvement process
- Overidentification of students with disabilities

12

12

<p>Are young children with disabilities entering kindergarten ready to learn?</p>	<ul style="list-style-type: none"> Indicator 6 Preschool Educational Environments Indicator 7 Preschool Outcomes Indicator 12 Early Childhood Transition from Part C to Part B
<p>Are children with disabilities achieving at high levels?</p>	<ul style="list-style-type: none"> Indicator 3 Assessment Participation & Performance Alternate Assessment Participation Indicator 4 Suspension/Expulsion Indicator 5 School-age Educational Environments
<p>Are youth with disabilities prepared for life, work and postsecondary education?</p>	<ul style="list-style-type: none"> Indicator 1 Graduation Federal Graduation Rate Indicator 2 Dropout Indicator 13 Secondary Transition Indicator 14 Postsecondary Outcomes
<p>Does the district implement IDEA to improve services and results for children with disabilities?</p>	<ul style="list-style-type: none"> Indicator 8 Facilitated Parent Involvement Indicator 11 Initial Evaluation Timelines Indicator 15 Timely Correction of Noncompliance Findings Indicator 20 Timely and Accurate Data
<p>Are children receiving equitable services and supports?</p>	<ul style="list-style-type: none"> Disproportionality: Identification for Special Education (Indicators 9 & 10) Disproportionality: Placement of Students with Disabilities Disproportionality: Discipline of Students with Disabilities

13

13

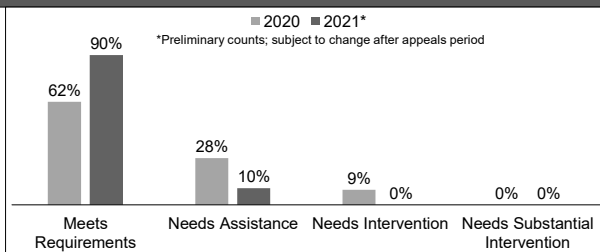
Number of Districts Receiving Ratings

Rating	Number of Districts Overall Rating	
	2020	2021*
Meets Requirements	640	886
Needs Assistance	292	98
Needs Intervention	95	0
Needs Substantial Intervention	0	0

*Preliminary counts; subject to change after appeals period

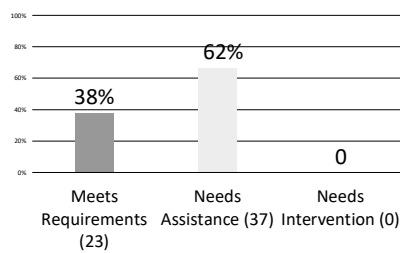
14

Percentage of Districts Receiving Ratings



15

How does Ohio compare to other states?



16

Ohio's 2021 Special Education Determination

Results Elements	RDA Score= 0	RDA Score= 1	RDA Score= 2
Percentage of CWD Exiting School by Graduating with a Regular High School Diploma	<70	70-77	>=78
Percentage of CWD Exiting School by Dropping Out	>19	19-14	<=13

17

Ohio's 2021 Special Education Determination

Needs Assistance, Year 2

Exiting	2019	2020	2021
SWD who dropped out	21%	21%	21%
SWD who graduated with a regular high school diploma	31%	50%***	48%

Class of 2019

18

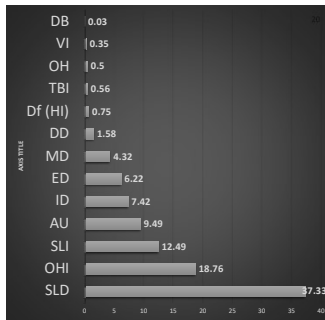
Ohio's 2021 Determination

- Ohio maintained its 100% score on compliance indicators for the 5th straight year
- Ohio's dropout rate and graduation rate for students with disabilities received scores of **zero**



19

Ohio's Landscape for Students with Disabilities



Ohio Department of Education

20

Data Comps

Special Education Profiles

Disability	2018-2019	2019-2020	Percent Difference	Percent Change
Total SWD	15.2	15.4	+2	+1.3%
SLD	36.22	37.33	+1.11	+3.0%
OHI	17.28	18.76	+1.48	+8.6%
SLI	13.85	12.49	-1.36	-9.8%
AU	9.49	9.96	+.47	+4.9%
ID	7.24	7.42	+.18	+2.5%
ED	5.83	6.22	+.39	+6.7%
MD	4.8	4.32	-.48	-10%
DD	2.51	1.58	-.93	-37%
TBI	.75	.50	-.25	-33%
OH	.57	.50	-.07	-12%
VI	.35	.35	0	NC
DB	.03	.03	0	NC

Ohio Department of Education

21

State Systemic Improvement Plan

- Post Secondary experiences
- Aligned partnerships
- Early warning systems – use of data!
- Higher education, State Dept. of Ed, Regional supports
- District, Building and teacher-based capacity and utilization

Ohio Department of Education

22

Other Upcoming and Exciting News

Guiding Coalition

Gifted/Gifted Advisory Council

Back to School Resources

Ohio Department of Education 23

23

OCALICONLINE

November 16-19th, 2021

Virtual
<https://conference.ocali.org/register>

Six Shifts to Improve Special Education and Other Interventions: Nate Levenson

Ohio Department of Education 24

24

25

Ohio Dyslexia Committee

Ohio Department of Education

25

Requirements

- Ohio Dyslexia Committee- 11 members
- Dyslexia Guidebook
- Professional Development for Teachers
- Recommend teacher ratios
- Identify screening and intervention measures
- Requires schools to administer annual dyslexia screenings 2022-2023
- Establishes a multi-sensory literacy certification process for teachers

[Ohio Dyslexia Committee website](#)

26

Updates

- Public Meetings- last Tuesday of the month at ODE
- Guidebook- December 31, 2021
- Chinnon Jaquay- School Psychology Representative
- Tier 1 Screener
- Each Child Reads Grant
- Defined "Certification"

Questions: dyslexia@education.ohio.gov

27

Clarifications

Transfer ETRs

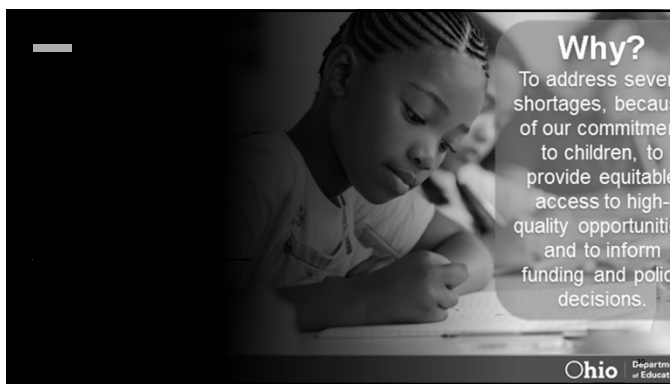
- In State
- Out of State
- Expired

Observations

28



29



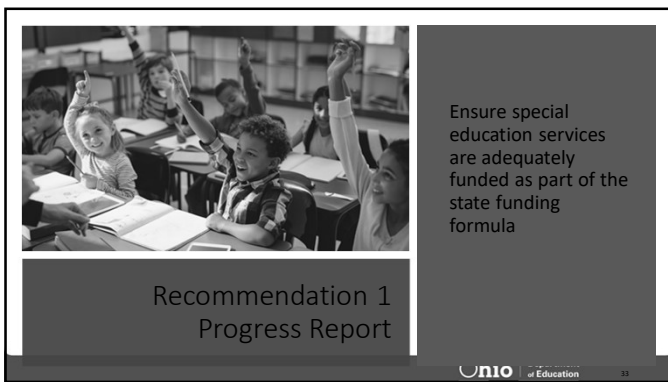
30



31



32



33




34

Recommendation 3 Progress Report

Create a full-time position at the Department of Education to oversee related services.

Partnerships
Guidance and Technical Assistance
Resource Development
Student Interventions
Workforce Tracking
Higher Education Partnerships


35

35



Recommendation 4 Progress Report

Conduct a review of the licensure structure currently used by the Department of Education as it applies to related services personnel.


36

36

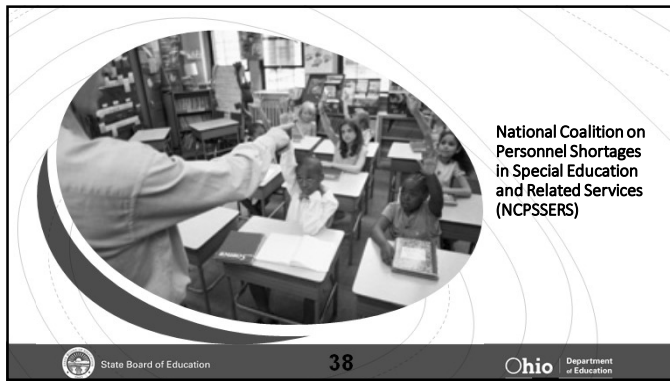


Recommendation 5 Progress Report

Support a cultural shift with the goal that related services are viewed as part of a collaborative student-driven, team-based approach to meet the needs of the whole child.


37

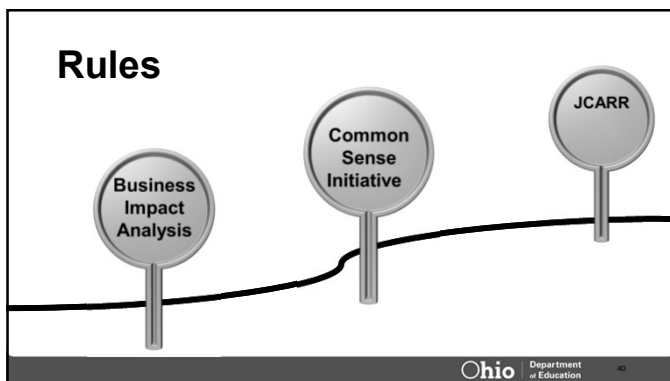
37



38



39



40

Questions?

- Worries?
- Concerns??
- Anxieties???

Ohio Department of Education 41

41







@OHEducation
@Petrarcajoe
@BernadetteL11

Ohio Department of Education 42

42

Share your learning community with us!

#MyOhioClassroom




Celebrate educators!

#OhioLovesTeachers

Ohio Department of Education 43

43
