

1


Purpose

- Challenge our fearful gaze
- Explore potential roots of this fear
- Reorient our gaze
- Vision spaces of belonging and acceptance

2

Commitments

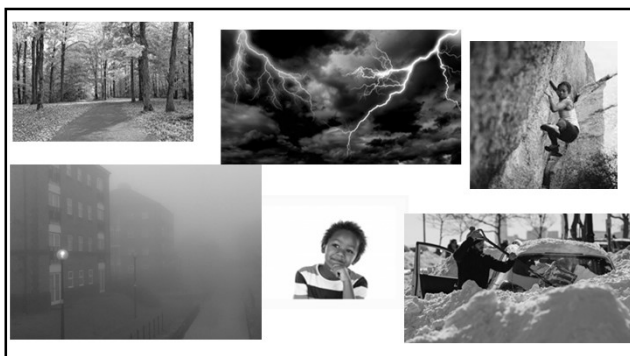
- Commit to looking in the mirror
- Commit to naming your biases



3

My field directly addresses racial disparities and has ongoing discussions about race.

4



5

Who do you serve?

6

Empathy

7

Empathy map

8

9



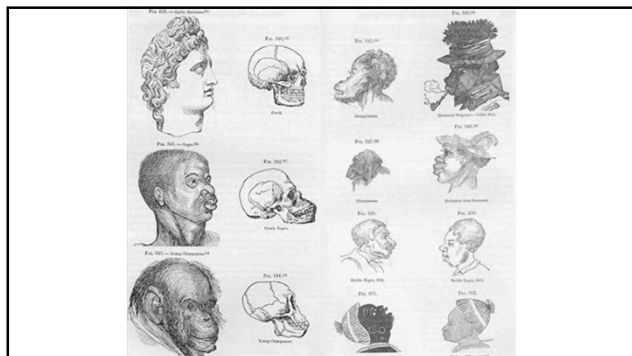
10



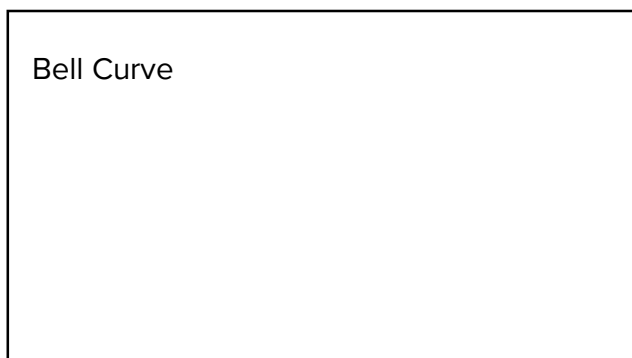
11



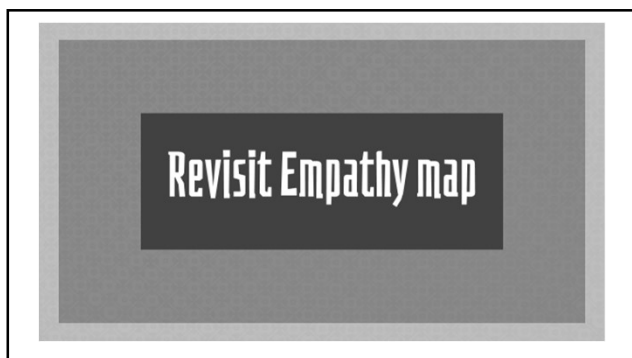
12



13



14



15

Deficit Beliefs

16

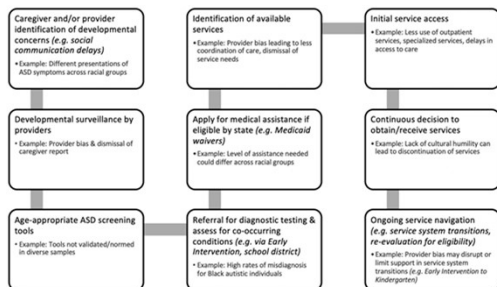


Figure 1. Pathway to access and utilize autism services, including examples of anti-Black racism. Adapted from Levy et al. (2015). Primary Care Clinical Pathway for Autism Screening and Referral, Children's Hospital of Pittsburgh, <https://www.chop.edu/clinical-pathway/autism-screening-and-referral-clinical-pathway>.

Article Copyright © 2021 Autism. Source DOI: 10.1177/13622818211043643. See content reuse guidelines at: sagepub.com/journalsPermissions

17

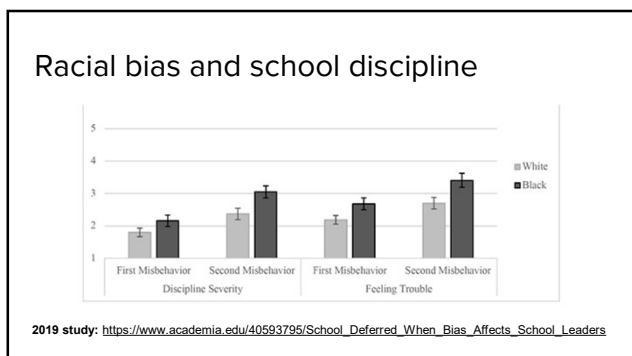
The fearful gaze in schools

18

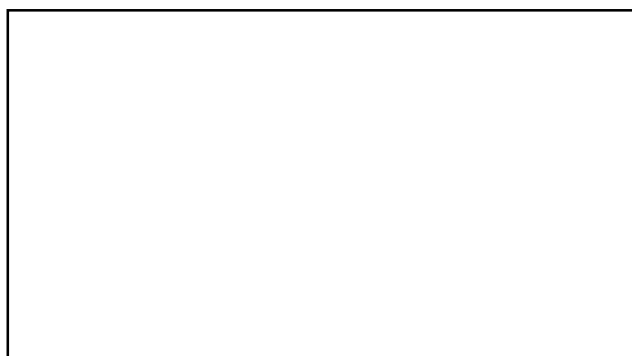


Jonathan Edwards

19



20



21

Reflect

22

What now?

23

*My field directly addresses racial disparities and
has ongoing discussions about race.*

24

Visualize

25

Not everything that is faced can
be changed, but nothing can be
changed until it is faced.

James Baldwin

26
