



The contents in this presentation are the protected intellectual property of Preseli Equity Group Consulting LLC. Do not replicate.



Diversity, Equity, Inclusion and Justice as an Anti-Oppressive Framework

Prepared for Ohio School Psychologist Association Fall Conference

Invitations for Learning



- Lean into learning
- Reminder it is not the responsibility of those who have been oppressed to be educators.
- Assume good intent
- Be vulnerable
- Speak from your experience
- Respect the space and confidentiality
- Actively participate
- Ask questions
- Check assumptions

Learning Objectives

Learn the connection between D.E.I.J. work and implicit bias	Unpack Benefits of D.E.I.J. in Schools and the role of the school psychologist	Learn strategies to mitigate bias
Develop a shared language around Diversity, Equity, Inclusion and Justice Work	Learn the intersectional impacts of implicit bias on educational outcomes for students & staff	

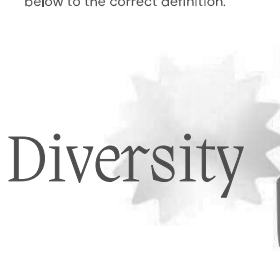
Pop Quiz!

Developing A Shared Language

“Language alone protects us from the scariness of things with no names.
Language alone is meditation.”
-Toni Morrison

Please raise your hand if you have ever felt nervous engaging in conversations about D.E.I.J.

Directions: Please match the term below to the correct definition.



Diversity

A The representation of the range of human differences, including but not limited to race, ethnicity, gender, gender identity, sexual orientation, age, social class, physical ability or attributes, religious or ethical values system, national origin, and political beliefs.

B The awareness, understanding, and skills that allow us to think through and value human differences. As our awareness and understanding expand, so do our diversity skills. Similarly, developing and refining our diversity skills increases our awareness and understanding.

© Diversity, Equity, and Inclusion | Center for Equity, Diversity, and Inclusion | University of Pittsburgh

Directions: Please match the term below to the correct definition.

Diversity Consciousness

A The representation of the range of human differences, including but not limited to race, ethnicity, gender, gender identity, sexual orientation, age, social class, physical ability or attributes, religious or ethical values system, national origin, and political beliefs.

B The awareness, understanding, and skills that allow us to think through and value human differences. As our awareness and understanding expand, so do our diversity skills. Similarly, developing and refining our diversity skills increases our awareness and understanding.

Diversity, Equity, and Inclusion | Office for Equity, Diversity, and Inclusion | University of Pittsburgh

Directions: Please match the term below to the correct definition.

Inclusion

A The recognition that a community or institution's success is dependent on how well it values, engages, and includes the rich diversity of students, staff, faculty, administrators, and communities.

B Authentically bringing traditionally excluded individuals and/or groups into processes, activities and decision/policy making in a way that shares power. It promotes broad engagement, shared participation, and advances authentic sense of belonging through safe, positive, and nurturing environments. Inclusion is key to eliminating systemic inequality.

Diversity, Equity, and Inclusion | Office for Equity, Diversity, and Inclusion | University of Pittsburgh

Directions: Please match the term below to the correct definition.

Inclusive Excellence

A The recognition that a community or institution's success is dependent on how well it values, engages, and includes the rich diversity of students, staff, faculty, administrators, and communities.

B Authentically bringing traditionally excluded individuals and/or groups into processes, activities and decision/policy making in a way that shares power. It promotes broad engagement, shared participation, and advances authentic sense of belonging through safe, positive, and nurturing environments. Inclusion is key to eliminating systemic inequality.

Diversity, Equity, and Inclusion | Office for Equity, Diversity, and Inclusion | University of Pittsburgh

Directions: Please match the term below to the correct definition.

Intersectionality

A The interconnected nature of social identities such as race, class, and gender that creates interdependent systems of privilege and disadvantage; the intersection of race, class, gender, and ability identities within each individual that informs how one views, discusses, and navigates through the world the way each of us views and discusses the world.

B A theoretical framework for examining American society with a belief that racism is embedded in U.S. laws and institutions and not just the result of individual prejudices or biases. Complementing the NASP Social Justice Strategic Goal, CRT seeks to understand inequities that exist based on race.

Diversity, Equity, and Inclusion | Office for Equity, Diversity, and Inclusion | University of Pittsburgh

Directions: Please match the term below to the correct definition.

Critical Race Theory

A The interconnected nature of social identities such as race, class, and gender that creates interdependent systems of privilege and disadvantage; the intersection of race, class, gender, and ability identities within each individual that informs how one views, discusses, and navigates through the world the way each of us views and discusses the world.

B A theoretical framework for examining American society with a belief that racism is embedded in U.S. laws and institutions and not just the result of individual prejudices or biases. Complementing the NASP Social Justice Strategic Goal, CRT seeks to understand inequities that exist based on race.

Diversity, Equity, and Inclusion | Office for Equity, Diversity, and Inclusion | University of Pittsburgh

Directions: Please match the term below to the correct definition.

Racism

A The systemic use of institutional power and ideological and cultural hegemony, resulting in one group benefiting at the expense of another; the use of power and the effects of domination. This allows systematic mistreatment and dehumanization of any individual based solely on a social identity group with which they identify that is supported and enforced by society and its institutions; based on the belief that people of such a social identity group are inherently inferior.

B An ideology and institution that reflects the racial worldview in which humans are divided into racial groups and in which races are arranged in a hierarchy where some races are considered innately superior to others; racism is the effect of domination of certain racial groups by other racial groups, historically the domination of people of color by white/European peoples.

Diversity, Equity, and Inclusion | Office for Equity, Diversity, and Inclusion | University of Pittsburgh

Directions: Please match the term below to the correct definition.

Oppression

A The systemic use of institutional power and ideological and cultural hegemony, resulting in one group benefiting at the expense of another; the use of power and the effects of domination. This allows systematic mistreatment and dehumanization of any individual based solely on a social identity group with which they identify that is supported and enforced by society and its institutions; based on the belief that people of such a social identity group are inherently inferior.

B An ideology and institution that reflects the racial worldview in which humans are divided into racial groups and in which races are arranged in a hierarchy where some races are considered innately superior to others; racism is the effect of domination of certain racial groups by other racial groups, historically the domination of people of color by white/European peoples.

Diversity, Equity, and Inclusion | Office for Equity, Diversity, and Inclusion | University of Pittsburgh
©2022 University of Pittsburgh

Directions: Please match the term below to the correct definition.

Implicit Bias

A Internalized, and subconscious beliefs created by exposure to oppressive messages like stereotypes that cause us to make unconscious assumptions about people we perceive as other.

B The exclusion of a people with sensory, physical and cognitive impairments

Diversity, Equity, and Inclusion | Office for Equity, Diversity, and Inclusion | University of Pittsburgh
©2022 University of Pittsburgh

Directions: Please match the term below to the correct definition.

Disablism

A Internalized, and subconscious beliefs created by exposure to oppressive messages like stereotypes that cause us to make unconscious assumptions about people we perceive as other.

B The exclusion of a people with sensory, physical and cognitive impairments

Diversity, Equity, and Inclusion | Office for Equity, Diversity, and Inclusion | University of Pittsburgh
©2022 University of Pittsburgh

Directions: Please match the term below to the correct definition.

Anti-Oppression

A The proportional distribution of desirable outcomes across groups. Sometimes confused with equality, this refers to outcomes while equality connotes equal treatment. More directly, this is when an individual's race, gender, socio-economic status, sexual orientation, etc. do not determine their educational, economic, social, or political opportunities.

B Used to denote an understanding of the importance of challenging systemic injustices that have come to be embedded in everyday practices, policies, procedures and thought patterns. Further to this, the term is employed as a way of indicating that people can simultaneously experience oppression in multiple aspects of their lives,

Diversity, Equity, and Inclusion | Office for Equity, Diversity, and Inclusion | University of Pittsburgh
©2022 University of Pittsburgh

Directions: Please match the term below to the correct definition.

Equity

A The proportional distribution of desirable outcomes across groups. Sometimes confused with equality, this refers to outcomes while equality connotes equal treatment. More directly, this is when an individual's race, gender, socio-economic status, sexual orientation, etc. do not determine their educational, economic, social, or political opportunities.

B Used to denote an understanding of the importance of challenging systemic injustices that have come to be embedded in everyday practices, policies, procedures and thought patterns. Further to this, the term is employed as a way of indicating that people can simultaneously experience oppression in multiple aspects of their lives,

Diversity, Equity, and Inclusion | Office for Equity, Diversity, and Inclusion | University of Pittsburgh
©2022 University of Pittsburgh

Directions: Please match the term below to the correct definition.

Justice

A The establishment or determination of rights according to rules of law and standards of equity; the process or result of using laws to fairly judge crimes and criminality. Can also be established via communities using restorative approaches that are reflective of healing, centering the harmed, and restoring community

B Brief and commonplace daily verbal, behavioral and environmental indignities, whether intentional or unintentional, that communicate hostile, derogatory, or negative racial, gender, sexual orientation and religious slights and insults to the target person or group.

Diversity, Equity, and Inclusion | Office for Equity, Diversity, and Inclusion | University of Pittsburgh
©2022 University of Pittsburgh

Directions: Please match the term below to the correct definition.

Microaggressions

A The establishment or determination of rights according to rules of law and standards of equity; the process or result of using laws to fairly judge crimes and criminality.

B Brief and commonplace daily verbal, behavioral and environmental indignities, whether intentional or unintentional, that communicate hostile, derogatory, or negative racial, gender, sexual orientation and religious slights and insults to the target person or group.

Diversity, Equity, and Inclusion (DEI) Office for Equity, Diversity, and Inclusion | University of Pittsburgh
© 2022 The University of Pittsburgh. All rights reserved. This document is the property of the University of Pittsburgh and is not to be distributed outside of the University of Pittsburgh.

Directions: Please match the term below to the correct definition.

Cultural Humility

A Refers to the attitudes and beliefs we have about a person or group on a conscious level. Much of the time, these biases and their expression arise as the direct result of a perceived threat. When people feel threatened, they are more likely to draw group boundaries to distinguish themselves from others.

B A process of reflection and lifelong inquiry involving self-awareness of personal and societal biases as well as awareness of aspects of identity that are most important to others, we encounter leading to continuous learning in an accepting and thoughtful manner that centers the other. It also involves a commitment to anti-oppressive practices.

Diversity, Equity, and Inclusion (DEI) Office for Equity, Diversity, and Inclusion | University of Pittsburgh
© 2022 The University of Pittsburgh. All rights reserved. This document is the property of the University of Pittsburgh and is not to be distributed outside of the University of Pittsburgh.

Directions: Please match the term below to the correct definition.

Conscious Bias/Explicit Bias

A Refers to the attitudes and beliefs we have about a person or group on a conscious level. Much of the time, these biases and their expression arise as the direct result of a perceived threat. When people feel threatened, they are more likely to draw group boundaries to distinguish themselves from others.

B A process of reflection and lifelong inquiry involving self-awareness of personal and societal biases as well as awareness of aspects of identity that are most important to others, we encounter leading to continuous learning in an accepting and thoughtful manner that centers the other. It also involves a commitment to anti-oppressive practices.

Diversity, Equity, and Inclusion (DEI) Office for Equity, Diversity, and Inclusion | University of Pittsburgh
© 2022 The University of Pittsburgh. All rights reserved. This document is the property of the University of Pittsburgh and is not to be distributed outside of the University of Pittsburgh.

Directions: Please match the term below to the correct definition.

Power

A Benefit, advantage, or favor granted to individuals and communities by unequal social structures and institutions.

B "Coercion, authority, and influence on structures are the three forms. It has four modalities; influencing behavior, normalizing, creating a status quo, implementation into structures. In an oppressive society, it is used to control resources and ideologies that impact outcomes on people's lives. Dynamics of it, explain how hierarchal power exists within context."

Diversity, Equity, and Inclusion (DEI) Office for Equity, Diversity, and Inclusion | University of Pittsburgh
© 2022 The University of Pittsburgh. All rights reserved. This document is the property of the University of Pittsburgh and is not to be distributed outside of the University of Pittsburgh.

Directions: Please match the term below to the correct definition.

Privilege

A Benefit, advantage, or favor granted to individuals and communities by unequal social structures and institutions.

B "Coercion, authority, and influence on structures are the three forms. It has four modalities; influencing behavior, normalizing, creating a status quo, implementation into structures. In an oppressive society, it is used to control resources and ideologies that impact outcomes on people's lives. Dynamics of it, explain how hierarchal power exists within context."

Diversity, Equity, and Inclusion (DEI) Office for Equity, Diversity, and Inclusion | University of Pittsburgh
© 2022 The University of Pittsburgh. All rights reserved. This document is the property of the University of Pittsburgh and is not to be distributed outside of the University of Pittsburgh.

Questions?

Request for additional language to add?

Diversity, Equity, and Inclusion (DEI) Office for Equity, Diversity, and Inclusion | University of Pittsburgh
© 2022 The University of Pittsburgh. All rights reserved. This document is the property of the University of Pittsburgh and is not to be distributed outside of the University of Pittsburgh.

Diversity, Equity, Inclusion, and Justice: An Anti-Oppressive Framework

D, E, I, J Work is an Anti-Oppressive Practice



Challenges Exclusionary Environments



Values Difference



Develops a critical consciousness



Brings awareness to inequity



Creates Shared Power & Decision Making



Creates individual, interpersonal, institutional, systemic solutions.



Disrupts bias and discrimination



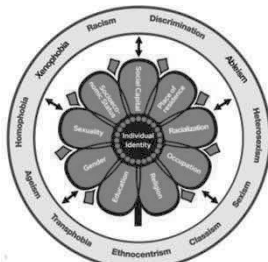
Creates Accountability



Values representation



Sustains Equitable Cultures

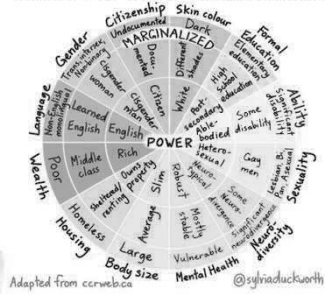


A visual depiction of how intersecting categories can shape one's individual identity (not exhaustive).

Oppressive Systems influence our life outcomes.

Discrimination, Environmental Injustices, Compounding Stressors

WHEEL OF POWER/PRIVILEGE

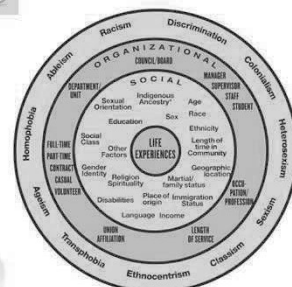


Oppressive Systems influence our access to

power and decision making, forcing the oppressed

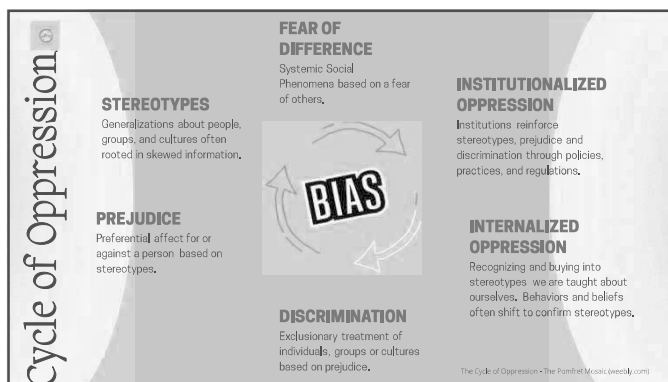
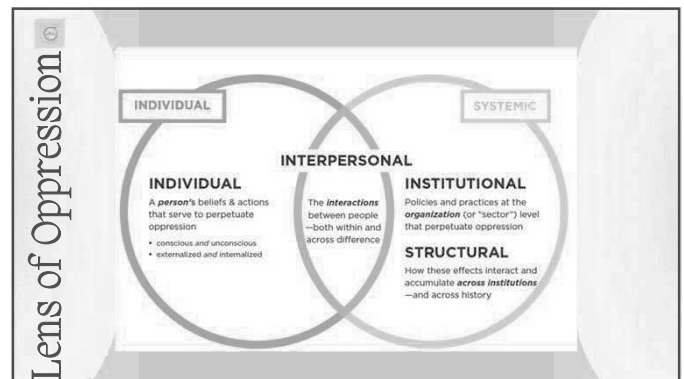
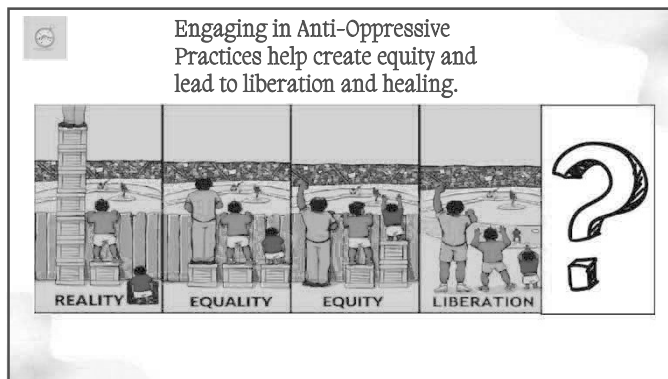


Our experiences are influenced by our identities and lifestyles.



We all navigate intersecting experiences of oppression in all aspects of our lives.

Personal, Social, Organizational, Societal



Paired Discussion

Directions: Read the School Psychology Unified Anti-Racism Statement and Call to Action and answer the following questions

- In your opinion how does anti-racism benefit students with disabilities?
- How can School Psychologist promote anti-racism in practice and in schools?
- What do you perceive as the most challenging aspect of using anti-racist practices?
- What are anti-racist practices?



Questions?

Break Time

15 Minutes

Unpacking Bias and Educational Outcomes

The School to Prison Pipeline

Exp

Implicit Bias in School Discipline

Implicit bias studies have shown that implicit biases affect teachers' perceptions of:

- Students' intelligence,
- Student culpability
- Endorsement of instructional practices
- Disproportionate school discipline outcomes.
- Identity based biases like race, gender and ability bias impact teacher's perceptions of competence.

Causes:

- Ambiguous disciplinary policies and procedures (emotional disturbance) increase space for discretion and subjective interpretation.
- Lack of an awareness of implicit biases.
- Time Constraints
- Large Classroom sizes
- Lack of representation



Black students represent 16% of school enrollment but 27% of students referred to law enforcement and 31% of in school arrest.

27%

31%

White Students make up 51% of school population but 41% of referrals to law enforcement and 39% in school arrest.

41%

39%

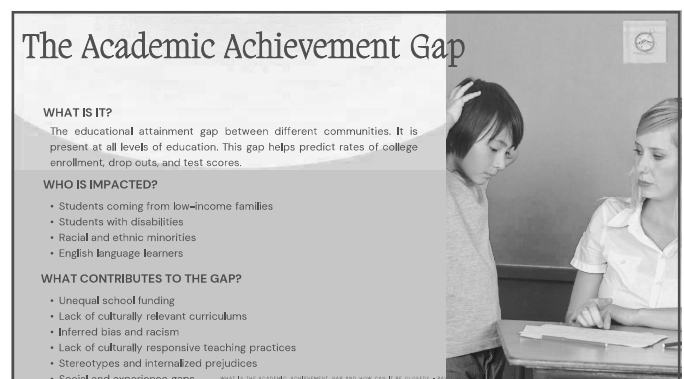
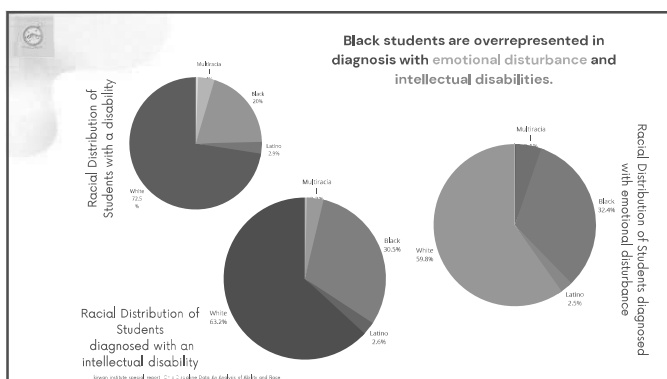
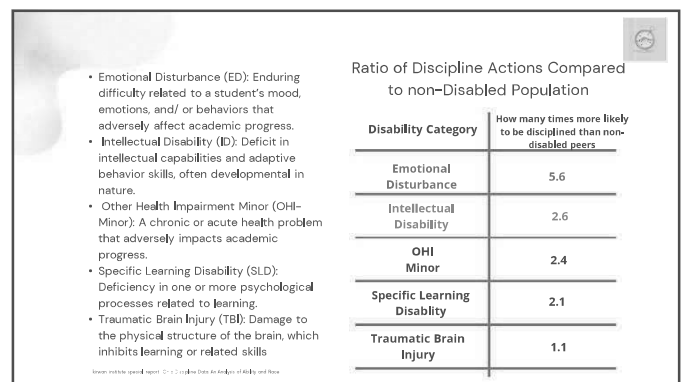
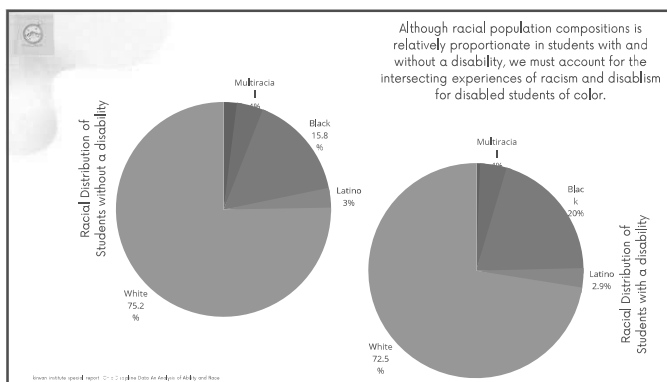
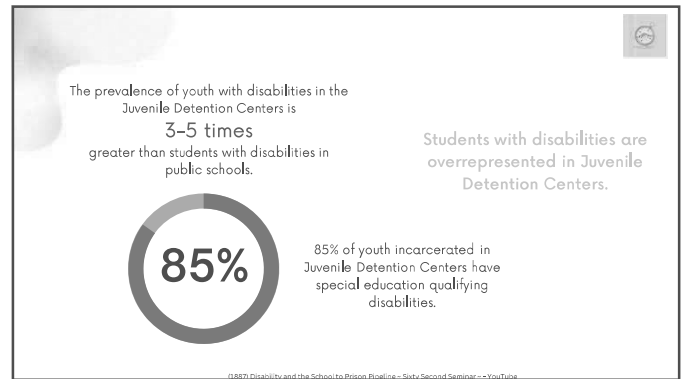
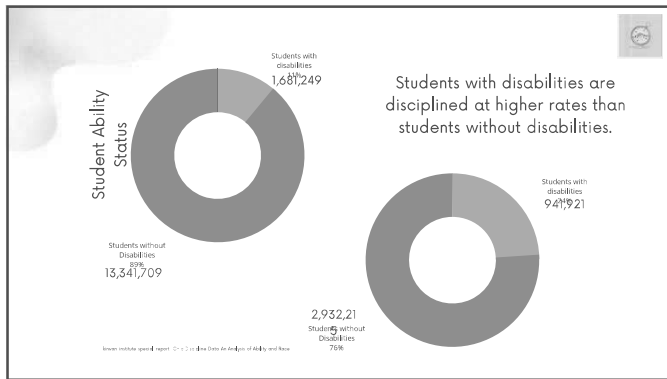
25%

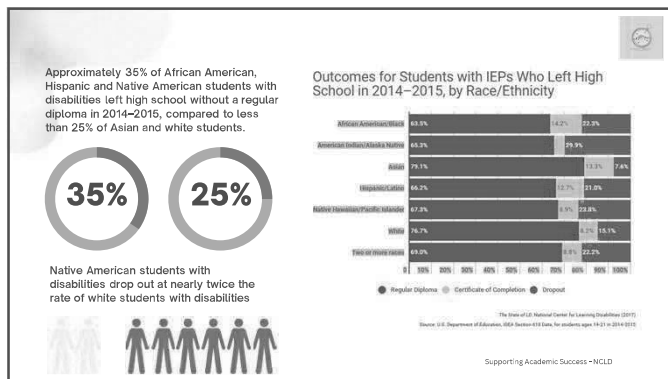
Students with disabilities make up 12% of the school population but 25% of those referred to law enforcement.

School Discipline Disparities

Implicit bias, or unconscious perceptions of students, can lead to students of color, students with disabilities, LGBTQ students and students from low-income communities are more likely to be suspended, expelled, or referred to law enforcement and arrest in schools.

Civil Rights Data Collection "Data Snapshot: School Discipline" (PDF) (ed.gov) 2014

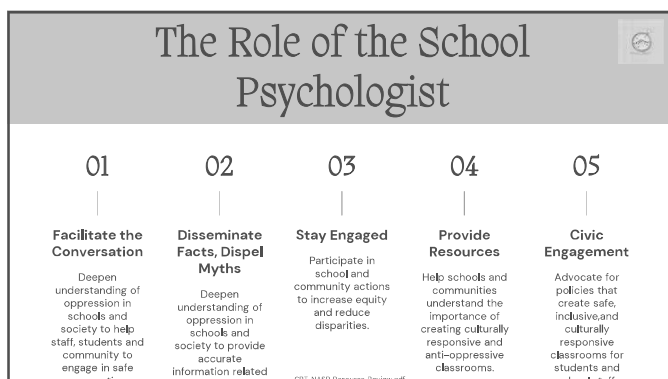
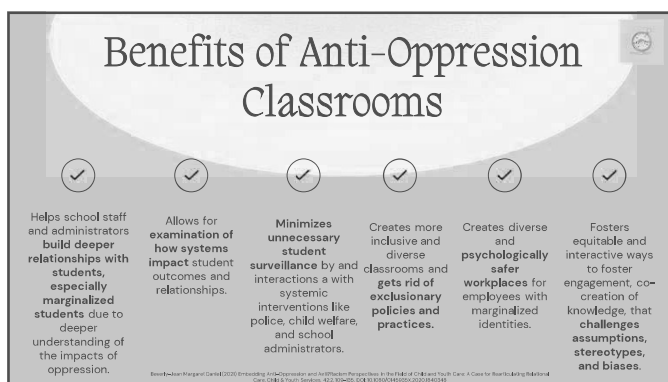




Anti-oppressive education is premised on the notion that many traditional and commonsense ways of engaging in "education" actually contribute to oppression in schools and society. Furthermore, anti-oppressive education is premised on the notion that many commonsense ways of "reforming education" actually mask the oppressions that need to be challenged. What results is a deep commitment to changing how we think about and engage in many aspects of education, from curriculum and pedagogy, to school culture and activities, to institutional structure and policies. Perhaps more importantly, what results is a deep commitment to exploring perspectives on education that do not conform to what has become "common sense" in the field of education. Anti-oppressive education expects to be different, perhaps uncomfortable, and even controversial.

Anti-Oppressive Education

Anti-Oppressive Education | K12 Academics



Small Group Discussion

- How are classrooms inclusive in your schools?
- What can School Psychologist do to help students feel a sense of belonging?
- Have you ever thought of D,E,I,J work as anti-oppressive work?
- How can the promotion of anti-oppressive practices in school benefit school psychologist?

Questions?

Strategies to Mitigate Bias

Mitigation Strategies



Practice Cultural Humility



Value Difference



Work Collaboratively with Diverse People



Bring awareness to inequity



Deepen understanding of personal cultural filters



Take an Implicit Association Test



Disrupts bias and discrimination in interpersonal interactions



Vote and Advocate for policies that promote equity



Engage in conversation about social justice topics



Challenge misinformation and stereotypes that promote bias

Questions?

Thank You!

Questions?



Preseli Equity Group Consulting, LLC.

www.preseliequity.com

Linked In

Preshuslee Thompson
Preseli Equity Group Consulting

Email

preshusleethompson@outlook.com