

Ohio Department of Health **aetna** **OhioRISE**

OhioRISE Resilience through Integrated Systems and Excellence

A specialized managed care program for youth with complex behavioral health and multi-system needs

Specialized Managed Care Plan
Aetna Better Health of Ohio will serve as the single statewide specialized managed care plan.

Shared Governance
OhioRISE features multi-agency governance to drive toward improving cross-system outcomes – we all serve many of the same kids and families.

Coordinated and Integrated Care & Services
OhioRISE brings together local entities, schools, providers, health plans, and families as part of our approach for improving care for enrolled youth.

Keep Families Together
OhioRISE will utilize a new 1915(c) waiver to target the most in need and vulnerable families and children to keep families together

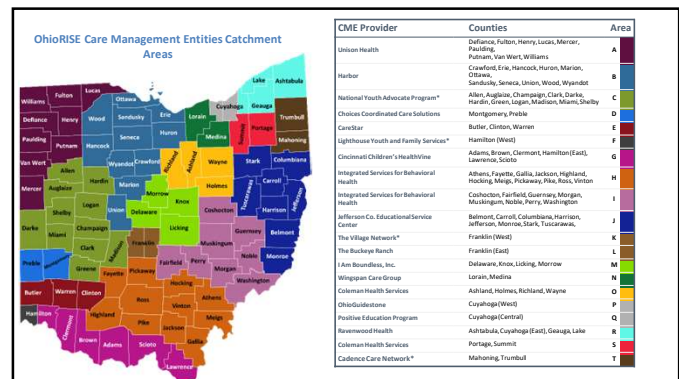
OhioRISE Enrollment

- ✓ Enrolled in Medicaid (managed care or fee for service)
- ✓ Age 0 - 20
- ✓ In need of significant behavioral health (BH) service
- ✓ Require significant functional intervention, as assessed by the Child and Adolescent Needs and Strengths (CANS)
- ✓ Estimate 50-60,000 children & youth by end of year 1

OhioRISE Services

- ✓ All existing behavioral health services – with a few limited exceptions (BH emergency dept.)
- ✓ Intensive and Moderate Care Coordination *NEW*
- ✓ Intensive Home-Based Treatment (IHBT) *ENHANCED*
- ✓ Psychiatric Residential Treatment Facility (PRTF) *NEW*
- ✓ Behavioral health respite *ENHANCED*
- ✓ Flex funds to support implementing a care plan *NEW*
- ✓ 1915(c) waiver that runs through OhioRISE *NEW*
 - Unique waiver services & eligibility
 - Mobile Response and Stabilization Service (MRSS) *NEW*
 - Also covered outside of OhioRISE (MCO and fee for service)

1



2

OhioRISE Services

- Care Coordination
- Psychiatric Residential Treatment Facilities (PRTF)
- Mobile Response and Stabilization Services (MRSS) *Also covered outside of OhioRISE*
- Behavioral Health Respite
- Intensive Home-Based Treatment (IHBT)
- Primary Flex Funds

JOCK JOSEPH AND MORTON MANDL SCHOOL OF APPLIED SOCIAL SCIENCES CASE WESTERN RESERVE UNIVERSITY
Child and Adolescent Behavioral Health Center of Excellence

3

MRSS OHIO

MOBILE RESPONSE AND STABILIZATION SERVICES

JOCK JOSEPH AND MORTON MANDL SCHOOL OF APPLIED SOCIAL SCIENCES CASE WESTERN RESERVE UNIVERSITY
Child and Adolescent Behavioral Health Center of Excellence

4

Within Ohio's Crisis Continuum of Care

Crisis Hotlines, Crisis Text Lines, Warm Lines
Crisis Intervention Teams (CIT)
Walk-In Crisis Services
Mobile Response and Stabilization Services (MRSS)
Intensive Home-Based Treatment (IHBT)
Crisis Stabilization Units
Psychiatric Hospitalization

JOCK JOSEPH AND MORTON MANDL SCHOOL OF APPLIED SOCIAL SCIENCES CASE WESTERN RESERVE UNIVERSITY
Child and Adolescent Behavioral Health Center of Excellence

5

Goals of MRSS:

- Mitigate risk and increase safety
- Improve the abilities of families to manage behavior and prevent or effectively manage future crises
- Prevent/reduce the need for care in a more restrictive setting such as inpatient psychiatric units, congregate care, and detention centers
- Enhance the resiliency and protective factors of families
- Facilitate the young person and caregiver's transition to identified supports, resources, and services

JOCK JOSEPH AND MORTON MANDL SCHOOL OF APPLIED SOCIAL SCIENCES CASE WESTERN RESERVE UNIVERSITY
Child and Adolescent Behavioral Health Center of Excellence

6

MRSS Overview:

- Home and community-based service available to any young person under the age of 21 and their families
- Family/Caller Defined Crisis
- Phases: 1) Screening & Triage, 2) Mobile Response (up to 72 hrs.), 3) Stabilization (up to 6 weeks)
- Mobile Response: Within 60 minutes to location of youth. Includes crisis assessment, crisis de-escalation and stabilization, and safety planning.
- Stabilization: Individualized services, supports, and wraparound planning are delivered to meet the unique needs and preferences of each family
- Transition: Individualized transition plan with warm hand-off to continuing services and supports



Child and Adolescent Behavioral Health
Center of Excellence

7

MRSS STATEWIDE CALL CENTER

1-888-418-MRSS (6777)



Child and Adolescent Behavioral Health
Center of Excellence

8

- Allwell: Muskingum
- Alta Care Group: Mahoning
- Applewood Centers: Lorain
- Bellefaire: Cuyahoga
- Butler Behavioral Health: Butler, Warren, Clinton
- Child Focus: Clermont
- Children's Resource Center: Wood
- Coleman Professional Services: Allen, Auglaize, Hardin, Putnam, Trumbull, Stark, Jefferson, Portage, Summit
- Family Life Counseling and Psychiatric Services: Huron, Richland
- Family Resource Center: Hancock
- First Alliance Healthcare of Ohio: Cuyahoga
- Foundations Behavioral Health Services: Mercer, Van Wert, Paulding
- Hopewell: Jackson, Hocking, Vinton, Washington
- Maryhaven: Union
- Nationwide Children's Hospital: Franklin
- New Horizons Mental Health Services: Fairfield
- Ravenwood: Geauga
- Samaritan Behavioral Health: Preble
- The Counseling Center (TCC): Wayne, Holmes
- Zepf Center: Lucas



Child and Adolescent Behavioral Health
Center of Excellence

9

Resources:

- OhioRISE: <https://managedcare.medicareid.ohio.gov/managed-care/ohiorise/00-ohiorise>
- MRSS Website: <https://mrssohio.org>
- OhioMHAS MRSS Rule: <https://codes.ohio.gov/ohio-administrative-code/rule-5122-29-14>



Child and Adolescent Behavioral Health
Center of Excellence

10

Nationwide Children's Hospital Mobile Response & Stabilization Services

Clinical Manager:

Meredith Adams, MSW, LISW-S

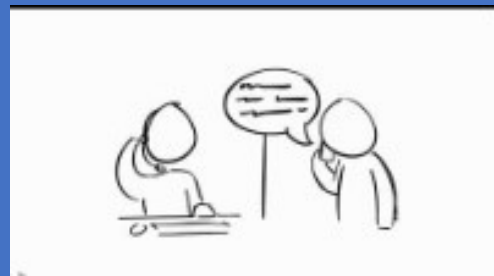
Clinical Lead Supervisors:

Sam Schoeppner, MPH, MSW, LISW-S
Mollie Nunez, MSSA, LISW-S
Jessica Michael, MSW, LISW-S
Molly Owens, MSW, LISW-S



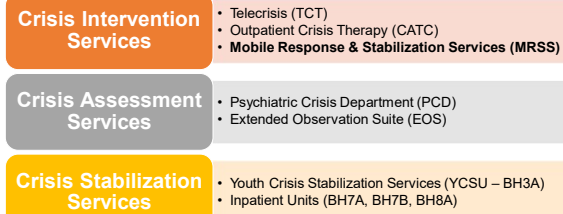
11

What is MRSS?



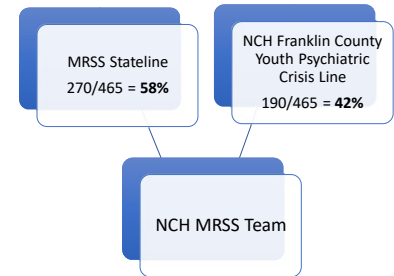
12

Behavioral Health Acute Services at NCH



13

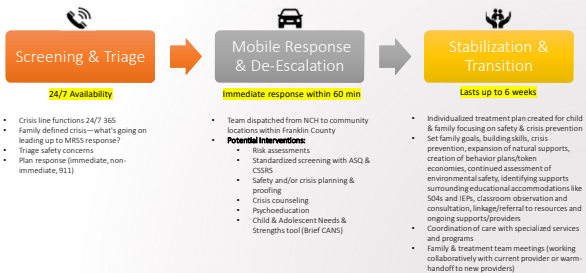
No Wrong Door Approach



14

MRSS Details

Meeting the family where they are provides us with the ability to use interventions to target *real-life triggers* in the environment



15

MRSS at NCH

Monday - Friday 9am - 9:30pm

• Working towards 24/7 availability

Team consists of:

- Clinicians
- Qualified Behavioral Health Specialists (QBHS)
- Parent Peer Support Specialists (PSS)

Initial Crisis Response

- Home/Community visit: team of 2 providers (clinician & QBHS or PSS)
- School visit: clinician can go independently

Stabilization Visit

- Usually, 1 provider
- Can be any member of the team depending on patient/family needs

16

MRSS in Schools pt 1

Anyone in school can request MRSS

We will encourage SCHOOL STAFF to contact family for consent for treatment (family encouraged to attend)

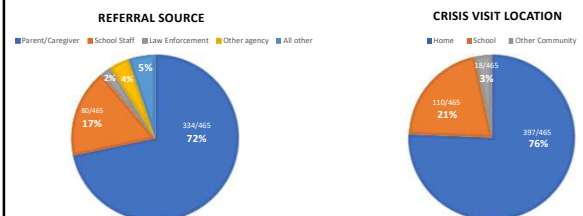
Families can request crisis visits to schools

Follow up visits can occur in schools (stabilization)

17

MRSS in Schools pt 2

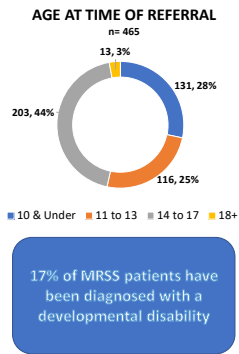
- Most common crises in schools: suicidal ideation, anxiety, depression, school avoidance, & behavioral concerns
- MRSS has responded to crises at ~25 different schools since August 2022



18

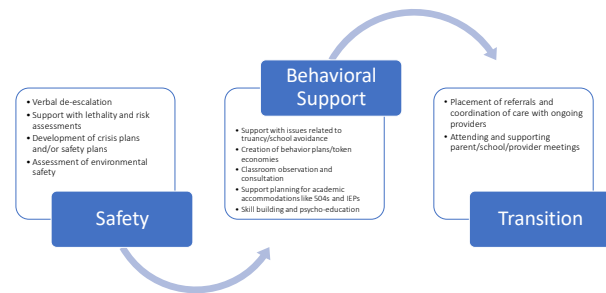
MRSS School Demographic Data

- Families served: 465
- Average days served: 18.89
- 64% of families continue into stabilization
- Gender:
 - 45% of patients identify as female
 - 52% as male
 - 3% as trans-gender or non-binary



19

Some MRSS Interventions in Schools...



20

If NCH MRSS is not an option...

(whether unavailable or screened OUT during triage)

- If need is **police, fire, EMS, etc.**, family will be connected to appropriate **emergency/911** services
- If **medical concern/ingestion/strangulation**, family will be directed to the **Emergency Department**
- If situation is **unsafe** for MRSS, family will be supported over crisis line and directed to the **Psychiatric Crisis Department**
- If **non-emergency** situation, NCH Telecrisis team provides crisis interventions as usual for all **crisis line calls**

In all above situations, MRSS still receives referral and will follow-up with family

21

NCH MRSS Family Feedback

"Our Clinician was a wonderful human being. She went above and beyond to make my child feel cared for. She even went under the table to play with him to meet him where he was. We are very grateful for the MRSS program."

"Our Parent Support Specialist went above and beyond for me. As a parent, I was not expecting to get the same amount of support that my child did. She made me feel calm during a very chaotic time."

"The MRSS Team made me feel heard. They created a wonderful environment for both me and my child."

22

Questions?

Samantha.Schoeppner@nationwidechildrens.org
330-704-9316

23

CME Access & Outreach



THE BUCKEYE RANCH
OhioRISE
Care Coordination

OHIORISE CARE COORDINATION IS A MEDICAID PROGRAM THAT PROVIDES COORDINATION AND SUPPORT TO CHILDREN, YOUTH, AND FAMILIES. TO QUALIFY, PLEASE SEE BELOW ON HOW TO COMPLETE AN ELIGIBILITY ASSESSMENT CALLED CANS.

Who is Eligible?

- Ohio Medicaid Managed Care Members
- Individuals 6 - 59 years old
- Individuals who require specialized behavioral health treatment

Benefits:

- Access to funds and resources to support the youth and family
- Referrals to specialized service providers

How to get Services?

Walk-in to our Buckeye Ranch locations and complete a CANS Assessment OR contact your Medicaid provider to schedule a CANS

SAME DAY ACCESS NUMBER:
(614) 364 - 7796

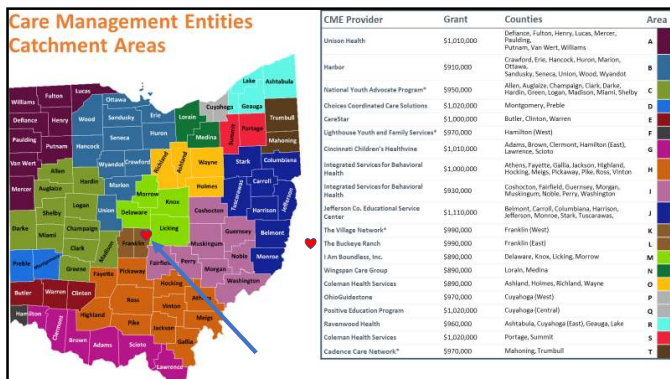
WALK-IN CANS ASSESSMENT:

1845 W. BROAD STREET
COLUMBUS, OHIO 43204
MONDAY & TUESDAY 9AM - 3PM

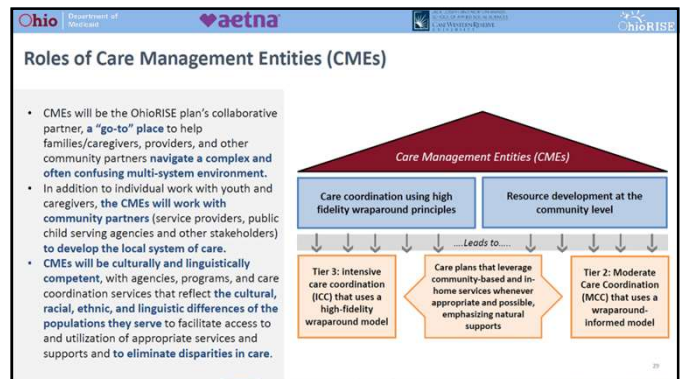
4453 S. MAIN STREET
WHITEHALL, OHIO 43153
WEDNESDAY 9AM - 3PM
THURSDAY 9AM - 3PM

Visit www.buckeyeranch.org for more information about our services or call the Outreach Center at <https://www.medicare.gov/medicaid-covered-providers/national-directory>

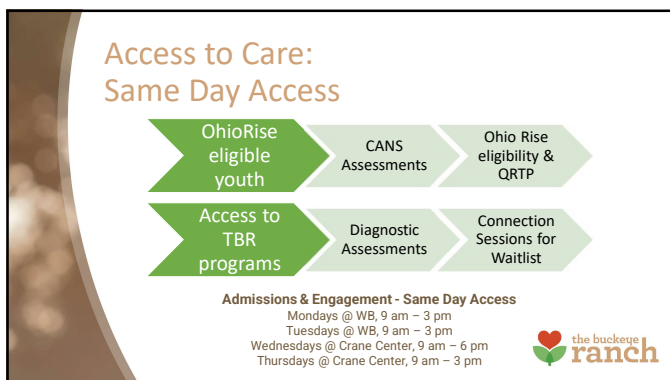
24



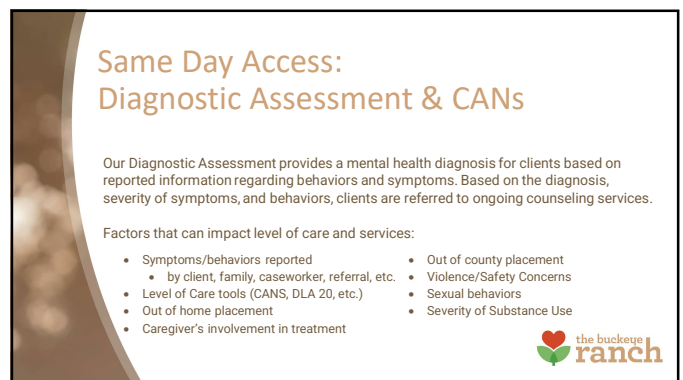
25



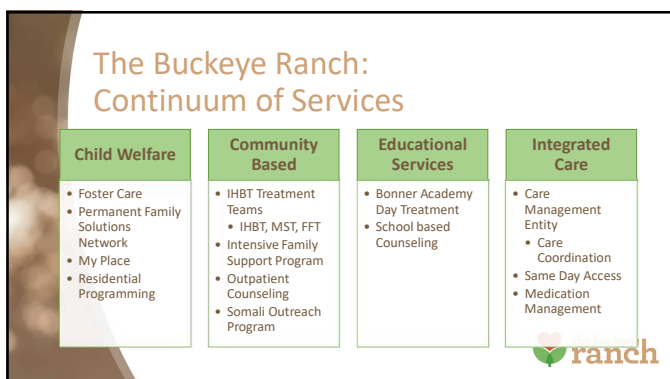
26



27



28



29