



**OhioRISE**

Resilience through  
Integrated Systems and Excellence

**A specialized managed care program for youth with complex  
behavioral health and multi-system needs**



### **Specialized Managed Care Plan**

Aetna Better Health of Ohio will serve as the single statewide  
specialized managed care plan.



### **Shared Governance**

OhioRISE features multi-agency governance to drive toward  
improving cross-system outcomes – we all serve many of the same  
kids and families.



### **Coordinated and Integrated Care & Services**

OhioRISE brings together local entities, schools, providers, health  
plans, and families as part of our approach for improving care for  
enrolled youth.



### **Keep Families Together**

OhioRISE will utilize a new 1915(c) waiver to target the most in need  
and vulnerable families and children to keep families together

## **OhioRISE Enrollment**

- ✓ Enrolled in Medicaid (managed care or fee for service)
- ✓ Age 0 - 20
- ✓ In need of significant behavioral health (BH) service
- ✓ Require significant functional intervention, as assessed by the  
Child and Adolescent Needs and Strengths (CANS)
- ✓ Estimate 50-60,000 children & youth by end of year 1

## **OhioRISE Services**

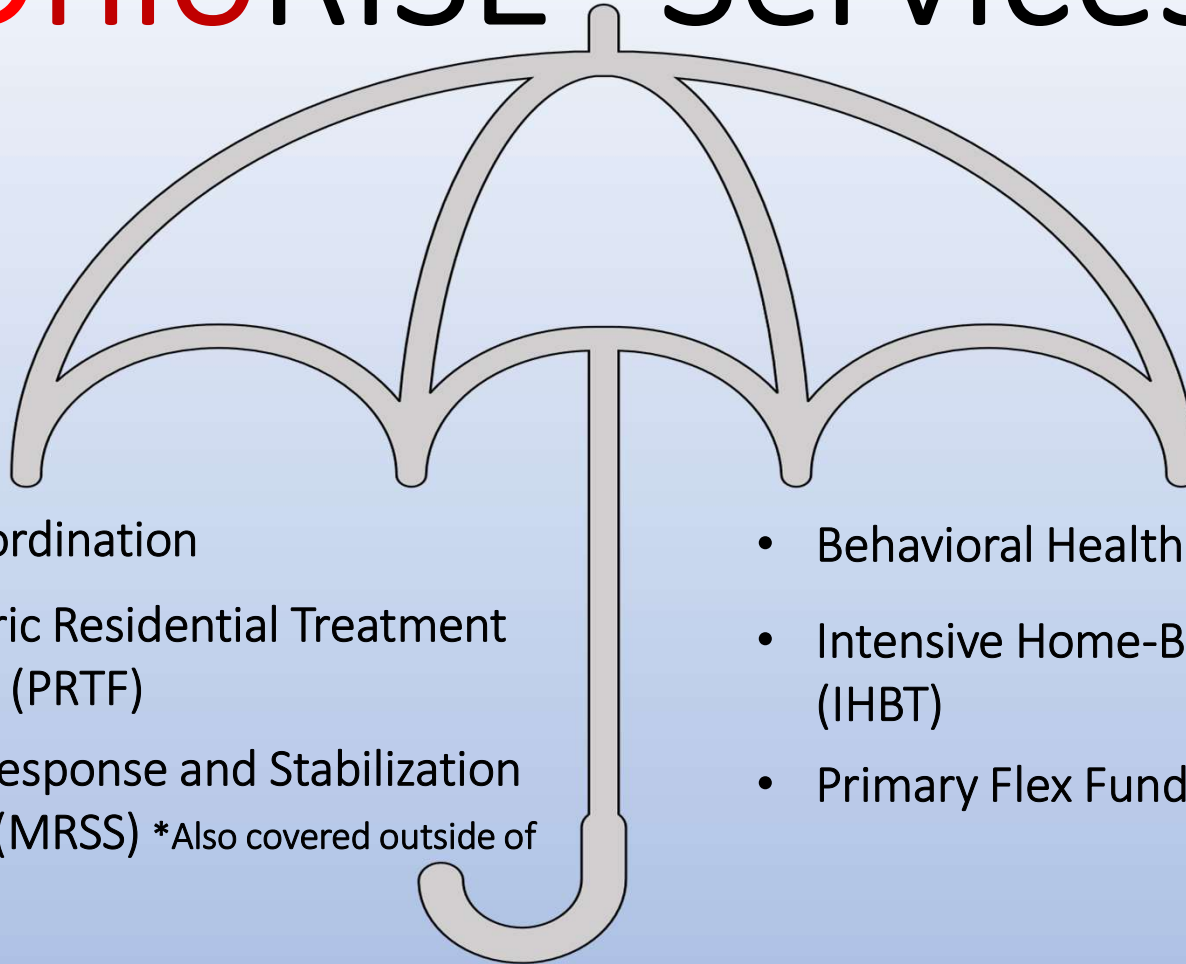
- ✓ All existing behavioral health services – with a few limited  
exceptions (BH emergency dept.)
- ✓ Intensive and Moderate Care Coordination **NEW**
- ✓ Intensive Home-Based Treatment (IHBT) **ENHANCED**
- ✓ Psychiatric Residential Treatment Facility (PRTF) **NEW**
- ✓ Behavioral health respite **ENHANCED**
- ✓ Flex funds to support implementing a care plan **NEW**
- ✓ 1915(c) waiver that runs through OhioRISE **NEW**
  - Unique waiver services & eligibility
- ✓ Mobile Response and Stabilization Service (MRSS) **NEW**
  - Also covered outside of OhioRISE (MCO and fee for  
service)

## OhioRISE Care Management Entities Catchment Areas



CME Provider	Counties	Area
Unison Health	Defiance, Fulton, Henry, Lucas, Mercer, Paulding, Putnam, Van Wert, Williams	A
Harbor	Crawford, Erie, Hancock, Huron, Marion, Ottawa, Sandusky, Seneca, Union, Wood, Wyandot	B
National Youth Advocate Program*	Allen, Auglaize, Champaign, Clark, Darke, Hardin, Green, Logan, Madison, Miami, Shelby	C
Choices Coordinated Care Solutions	Montgomery, Preble	D
CareStar	Butler, Clinton, Warren	E
Lighthouse Youth and Family Services*	Hamilton (West)	F
Cincinnati Children's HealthVine	Adams, Brown, Clermont, Hamilton (East), Lawrence, Scioto	G
Integrated Services for Behavioral Health	Athens, Fayette, Gallia, Jackson, Highland, Hocking, Meigs, Pickaway, Pike, Ross, Vinton	H
Integrated Services for Behavioral Health	Coshocton, Fairfield, Guernsey, Morgan, Muskingum, Noble, Perry, Washington	I
Jefferson Co. Educational Service Center	Belmont, Carroll, Columbiana, Harrison, Jefferson, Monroe, Stark, Tuscarawas,	J
The Village Network*	Franklin (West)	K
The Buckeye Ranch	Franklin (East)	L
I Am Boundless, Inc.	Delaware, Knox, Licking, Morrow	M
Wingspan Care Group	Lorain, Medina	N
Coleman Health Services	Ashland, Holmes, Richland, Wayne	O
OhioGuidestone	Cuyahoga (West)	P
Positive Education Program	Cuyahoga (Central)	Q
Ravenwood Health	Ashtabula, Cuyahoga (East), Geauga, Lake	R
Coleman Health Services	Portage, Summit	S
Cadence Care Network*	Mahoning, Trumbull	T

# OhioRISE Services



- Care Coordination
- Psychiatric Residential Treatment Facilities (PRTF)
- Mobile Response and Stabilization Services (MRSS) \*Also covered outside of OhioRISE\*

- Behavioral Health Respite
- Intensive Home-Based Treatment (IHBT)
- Primary Flex Funds



JACK, JOSEPH AND MORTON MANDEL  
SCHOOL OF APPLIED SOCIAL SCIENCES  
CASE WESTERN RESERVE  
UNIVERSITY

Child and Adolescent Behavioral Health  
Center of Excellence



MOBILE RESPONSE AND STABILIZATION SERVICES



Child and Adolescent Behavioral Health  
Center of Excellence

# Within Ohio's Crisis Continuum of Care

Crisis Hotlines, Crisis Text Lines, Warm Lines

Crisis Intervention Teams (CIT)

Walk-In Crisis Services

**Mobile Response and Stabilization Services (MRSS)**

Intensive Home-Based Treatment (IHBT)

Crisis Stabilization Units

Psychiatric Hospitalization



JACK, JOSEPH AND MORTON MANDEL  
SCHOOL OF APPLIED SOCIAL SCIENCES  
CASE WESTERN RESERVE  
UNIVERSITY

Child and Adolescent Behavioral Health  
Center of Excellence



# Goals of MRSS:

- |  |
|--|
| • Mitigate risk and increase safety  |
| • Improve the abilities of families to manage behavior and prevent or effectively manage future crises                                       |
| • Prevent/reduce the need for care in a more restrictive setting such as inpatient psychiatric units, congregate care, and detention centers |
| • Enhance the resiliency and protective factors of families  |
| • Facilitate the young person and caregiver's transition to identified supports, resources, and services                                     |

# MRSS Overview:

- Home and community-based service available to any young person under the age of 21 and their families
- Family/Caller Defined Crisis
- Phases: 1) Screening & Triage, 2) Mobile Response (up to 72 hrs.), 3) Stabilization (up to 6 weeks)
- Mobile Response: Within 60 minutes to location of youth. Includes crisis assessment, crisis de-escalation and stabilization, and safety planning.
- Stabilization: Individualized services, supports, and wraparound planning are delivered to meet the unique needs and preferences of each family
- Transition: Individualized transition plan with warm hand-off to continuing services and supports



JACK, JOSEPH AND MORTON MANDEL  
SCHOOL OF APPLIED SOCIAL SCIENCES  
CASE WESTERN RESERVE  
UNIVERSITY

Child and Adolescent Behavioral Health  
Center of Excellence

# MRSS STATEWIDE CALL CENTER

1-888-418-MRSS (6777)





- **Allwell:** Muskingum
- **Alta Care Group:** Mahoning
- **Applewood Centers:** Lorain
- **Bellefaire:** Cuyahoga
- **Butler Behavioral Health:** Butler, Warren, Clinton
- **Child Focus:** Clermont
- **Children's Resource Center:** Wood
- **Coleman Professional Services:** Allen, Auglaize, Hardin, Putnam, Trumbull, Stark, Jefferson, Portage, Summit
- **Family Life Counseling and Psychiatric Services:** Huron, Richland
- **Family Resource Center:** Hancock
- **First Alliance Healthcare of Ohio:** Cuyahoga
- **Foundations Behavioral Health Services:** Mercer, Van Wert, Paulding
- **Hopewell:** Jackson, Hocking, Vinton, Washington
- **Maryhaven:** Union
- **Nationwide Children's Hospital:** Franklin
- **New Horizons Mental Health Services:** Fairfield
- **Ravenwood:** Geauga
- **Samaritan Behavioral Health:** Preble
- **The Counseling Center (TCC):** Wayne, Holmes
- **Zepf Center:** Lucas



JACK, JOSEPH AND MORTON MANDEL  
SCHOOL OF APPLIED SOCIAL SCIENCES  
CASE WESTERN RESERVE  
UNIVERSITY

Child and Adolescent Behavioral Health  
Center of Excellence



## Resources:

- OhioRISE:  
<https://managedcare.medicaid.ohio.gov/managed-care/ohiorise/00-ohiorise>
- MRSS Website: <https://mrssohio.org>
- OhioMHAS MRSS Rule: <https://codes.ohio.gov/ohio-administrative-code/rule-5122-29-14>



JACK, JOSEPH AND MORTON MANDEL  
SCHOOL OF APPLIED SOCIAL SCIENCES  
CASE WESTERN RESERVE  
UNIVERSITY

Child and Adolescent Behavioral Health  
Center of Excellence

# Nationwide Children's Hospital

## Mobile Response & Stabilization Services

### Clinical Manager:

Meredith Adams, MSW, LISW-S

### Clinical Lead Supervisors:

Sam Schoeppner, MPH, MSW, LISW-S

Mollee Nunez, MSSA, LISW-S

Jessica Michael, MSW, LISW-S

Molly Owens, MSW, LISW-S



# What is MRSS?



# Behavioral Health Acute Services at NCH

## Crisis Intervention Services

- Telecrisis (TCT)
- Outpatient Crisis Therapy (CATC)
- **Mobile Response & Stabilization Services (MRSS)**

## Crisis Assessment Services

- Psychiatric Crisis Department (PCD)
- Extended Observation Suite (EOS)

## Crisis Stabilization Services

- Youth Crisis Stabilization Services (YCSU – BH3A)
- Inpatient Units (BH7A, BH7B, BH8A)

# No Wrong Door Approach

MRSS Stateline  
 $270/465 = 58\%$

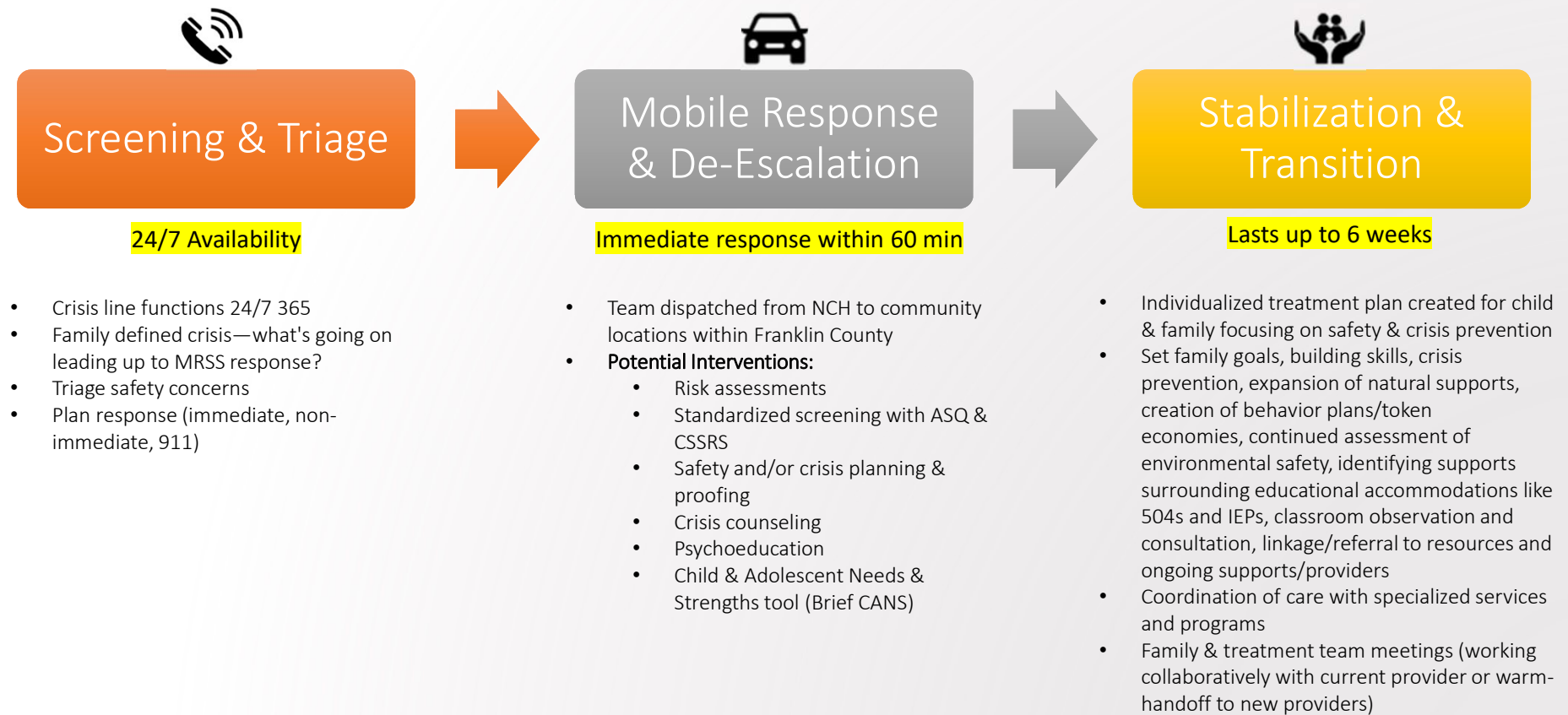
NCH Franklin County  
Youth Psychiatric  
Crisis Line  
 $190/465 = 42\%$

NCH MRSS Team

```
graph TD; A[NCH MRSS Team] --- B[MRSS Stateline 270/465 = 58%]; A --- C[NCH Franklin County Youth Psychiatric Crisis Line 190/465 = 42%];
```

# MRSS Details

Meeting the family where they are provides us with the ability to use interventions to target *real-life triggers* in the environment



**Goal:** Keep child safe in the community by building natural supports, identifying, teaching and practicing coping skills, improving communication channels, and creating a safe environment for the child and family by joining along-side them

# MRSS at NCH

## Monday - Friday 9am - 9:30pm

- Working towards 24/7 availability

## Team consists of:

- Clinicians
- Qualified Behavioral Health Specialists (QBHS)
- Parent Peer Support Specialists (PSS)

## Initial Crisis Response

- Home/Community visit: team of 2 providers (clinician & QBHS or PSS)
- School visit: clinician can go independently

## Stabilization Visit

- Usually, 1 provider
  - Can be any member of the team depending on patient/family needs



# MRSS in Schools pt 1

Anyone in school can request MRSS

We will encourage SCHOOL STAFF to contact family for consent for treatment (family encouraged to attend)

Families can request crisis visits to schools

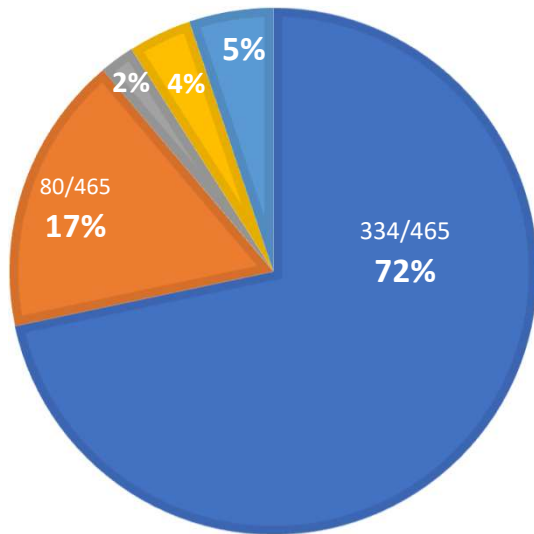
Follow up visits can occur in schools (stabilization)

# MRSS in Schools pt 2

- Most common crises in schools: suicidal ideation, anxiety, depression, school avoidance, & behavioral concerns
- MRSS has responded to crises at ~25 different schools since August 2022

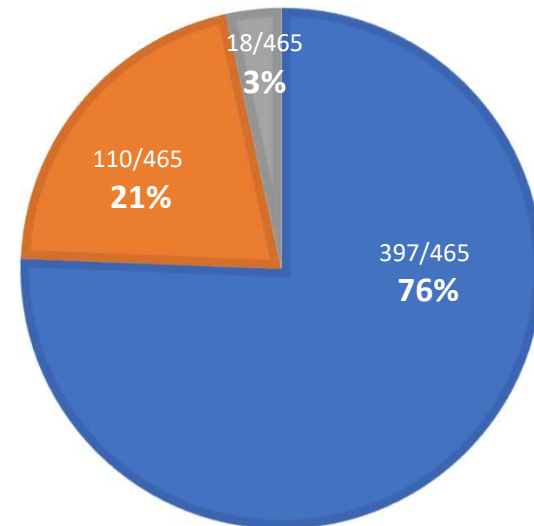
**REFERRAL SOURCE**

■ Parent/Caregiver ■ School Staff ■ Law Enforcement ■ Other agency ■ All other



**CRISIS VISIT LOCATION**

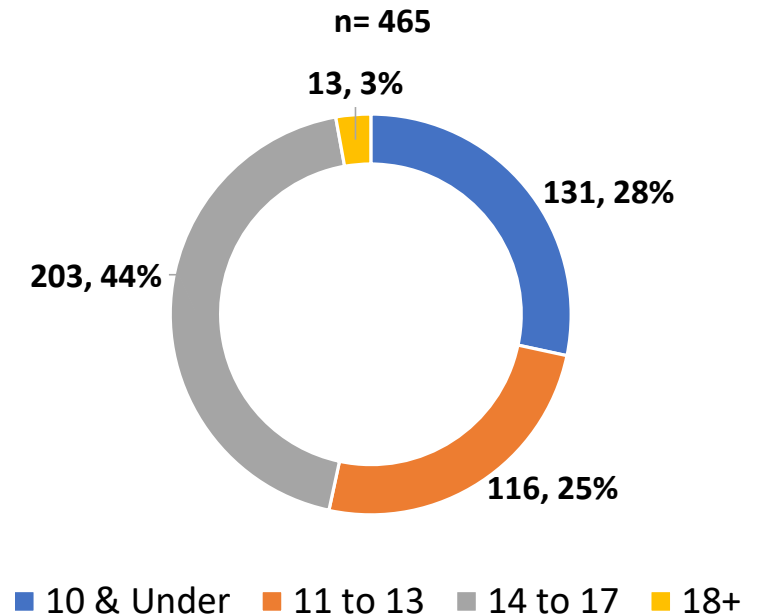
■ Home ■ School ■ Other Community



## MRSS School Demographic Data

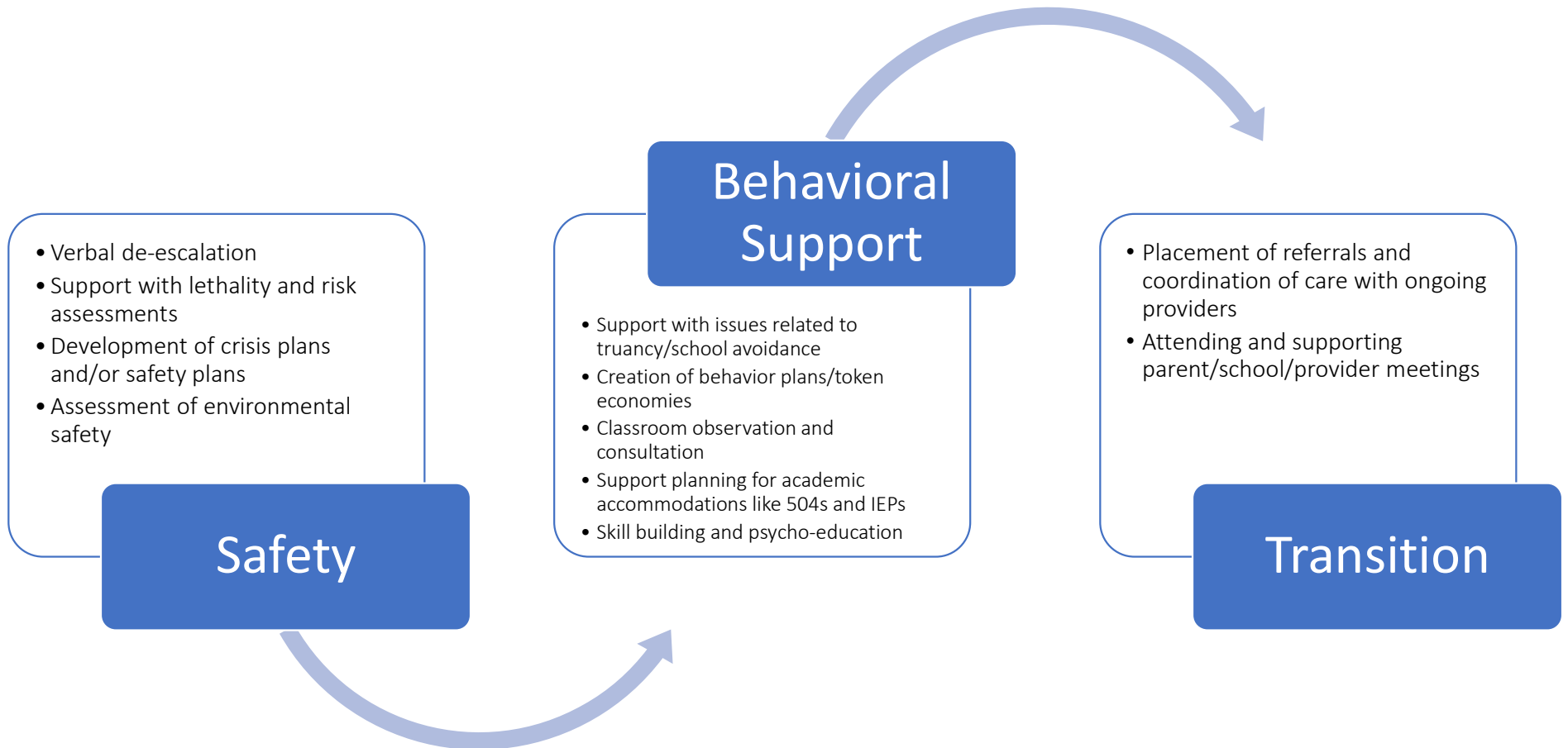
- Families served: 465
- Average days served: 18.89
- 64% of families continue into stabilization
- Gender:
  - 45% of patients identify as female
  - 52% as male
  - 3% as trans-gender or non-binary

### AGE AT TIME OF REFERRAL



17% of MRSS patients have been diagnosed with a developmental disability

# Some MRSS Interventions in Schools...



# If NCH MRSS is not an option...

(whether unavailable or screened OUT during triage)

- If need is **police, fire, EMS, etc.**, family will be connected to appropriate **emergency/911** services
- If **medical concern/ingestion/strangulation**, family will be directed to the **Emergency Department**
- If situation is **unsafe** for MRSS, family will be supported over crisis line and directed to the **Psychiatric Crisis Department**
- If **non-emergency** situation, NCH Telecrisis team provides crisis interventions as usual for all **crisis line calls**

*In all above situations, MRSS still receives referral and will follow-up with family*

# NCH MRSS Family Feedback

*“Our Clinician was a wonderful human being. She went above and beyond to make my child feel cared for. She even went under the table to play with him to meet him where he was. We are very grateful for the MRSS program.”*

*“Our Parent Support Specialist went above and beyond for me. As a parent, I was not expecting to get the same amount of support that my child did. She made me feel calm during a very chaotic time.”*

*“The MRSS Team made me feel heard. They created a wonderful environment for both me and my child.”*

# Questions?



[Samantha.Schoeppner@nationwidechildrens.org](mailto:Samantha.Schoeppner@nationwidechildrens.org)



330-704-9316



# CME Access & Outreach



## THE BUCKEYE RANCH OhioRISE Care Coordination

OHIORISE CARE COORDINATION IS A MEDICAID PROGRAM THAT PROVIDES COORDINATION AND SUPPORT TO CHILDREN, YOUTH, AND FAMILIES. TO QUALIFY, PLEASE SEE BELOW ON HOW TO COMPLETE AN ELIGIBILITY ASSESSMENT CALLED CANS.

### Who is Eligible?

- Ohio Medicaid Managed Care Members
- Individuals 0 - 20 years old
- Individuals who require specialized behavioral health treatment

### Benefits:

- Access to funds and resources to support the youth and family
- Referrals to specialized service providers

### How to get Services?

Walk-in to our Buckeye Ranch locations and complete a CANS Assessment OR contact your Medicaid provider to schedule a CANS.

SAME DAY ACCESS NUMBER:  
(614) 384 - 7798

### WALK-IN CANS ASSESSMENT:



2865 W. BROAD STREET  
COLUMBUS, OHIO 43204  
MONDAY & TUESDAY 9AM - 3PM



4653 E. MAIN STREET  
WHITEHALL, OHIO 43213  
WEDNESDAY 9AM - 6PM  
THURSDAY 9AM - 3PM

Visit [www.buckeyeranch.org](http://www.buckeyeranch.org) for more information about our services  
or visit the OhioRISE website:  
<https://managedcare.medicaid.ohio.gov/managed-care/ohiorise/>



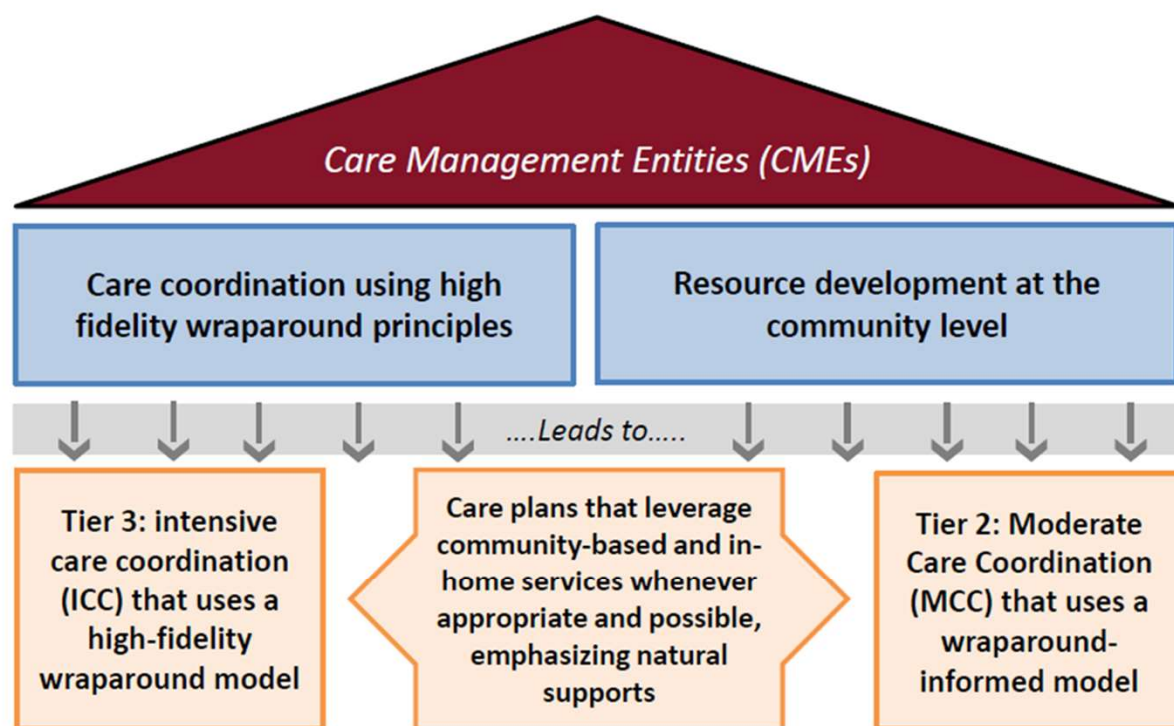
# Care Management Entities Catchment Areas



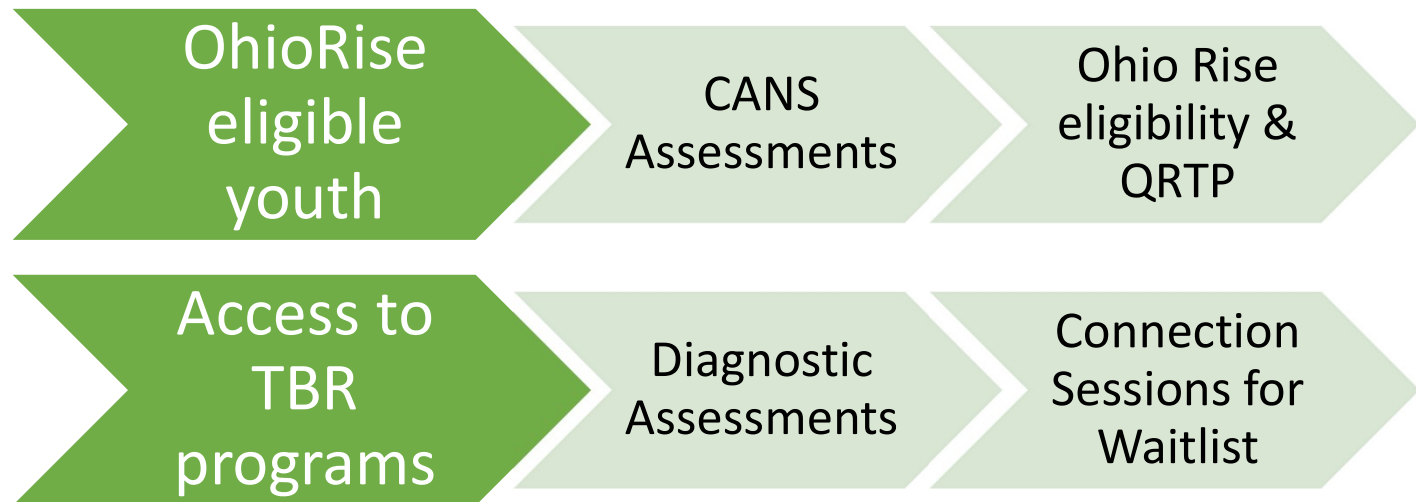
CME Provider	Grant	Counties	Area
Unison Health	\$1,010,000	Defiance, Fulton, Henry, Lucas, Mercer, Paulding, Putnam, Van Wert, Williams	A
Harbor	\$910,000	Crawford, Erie, Hancock, Huron, Marion, Ottawa, Sandusky, Seneca, Union, Wood, Wyandot	B
National Youth Advocate Program*	\$950,000	Allen, Auglaize, Champaign, Clark, Darke, Hardin, Green, Logan, Madison, Miami, Shelby	C
Choices Coordinated Care Solutions	\$1,020,000	Montgomery, Preble	D
CareStar	\$1,000,000	Butler, Clinton, Warren	E
Lighthouse Youth and Family Services*	\$970,000	Hamilton (West)	F
Cincinnati Children's Healthvine	\$1,010,000	Adams, Brown, Clermont, Hamilton (East), Lawrence, Scioto	G
Integrated Services for Behavioral Health	\$1,000,000	Athens, Fayette, Gallia, Jackson, Highland, Hocking, Meigs, Pickaway, Pike, Ross, Vinton	H
Integrated Services for Behavioral Health	\$930,000	Coshocton, Fairfield, Guernsey, Morgan, Muskingum, Noble, Perry, Washington	I
Jefferson Co. Educational Service Center	\$1,110,000	Belmont, Carroll, Columbiana, Harrison, Jefferson, Monroe, Stark, Tuscarawas	J
The Village Network*	\$990,000	Franklin (West)	K
The Buckeye Ranch	\$990,000	Franklin (East)	L
I Am Boundless, Inc.	\$890,000	Delaware, Knox, Licking, Morrow	M
Wingspan Care Group	\$890,000	Lorain, Medina	N
Coleman Health Services	\$890,000	Ashland, Holmes, Richland, Wayne	O
OhioGuidestone	\$970,000	Cuyahoga (West)	P
Positive Education Program	\$1,020,000	Cuyahoga (Central)	Q
Ravenwood Health	\$960,000	Ashtabula, Cuyahoga (East), Geauga, Lake	R
Coleman Health Services	\$1,020,000	Portage, Summit	S
Cadence Care Network*	\$970,000	Mahoning, Trumbull	T

## Roles of Care Management Entities (CMEs)

- CMEs will be the OhioRISE plan's collaborative partner, a **"go-to" place** to help families/caregivers, providers, and other community partners **navigate a complex and often confusing multi-system environment**.
- In addition to individual work with youth and caregivers, **the CMEs will work with community partners** (service providers, public child serving agencies and other stakeholders) **to develop the local system of care**.
- **CMEs will be culturally and linguistically competent**, with agencies, programs, and care coordination services that reflect **the cultural, racial, ethnic, and linguistic differences of the populations they serve** to facilitate access to and utilization of appropriate services and supports and **to eliminate disparities in care**.



# Access to Care: Same Day Access



## **Admissions & Engagement - Same Day Access**

Mondays @ WB, 9 am – 3 pm

Tuesdays @ WB, 9 am – 3 pm

Wednesdays @ Crane Center, 9 am – 6 pm

Thursdays @ Crane Center, 9 am – 3 pm





# Same Day Access: Diagnostic Assessment & CANs

Our Diagnostic Assessment provides a mental health diagnosis for clients based on reported information regarding behaviors and symptoms. Based on the diagnosis, severity of symptoms, and behaviors, clients are referred to ongoing counseling services.

Factors that can impact level of care and services:

- Symptoms/behaviors reported
  - by client, family, caseworker, referral, etc.
- Level of Care tools (CANS, DLA 20, etc.)
- Out of home placement
- Caregiver's involvement in treatment
- Out of county placement
- Violence/Safety Concerns
- Sexual behaviors
- Severity of Substance Use



# The Buckeye Ranch: Continuum of Services

## Child Welfare

- Foster Care
- Permanent Family Solutions Network
- My Place
- Residential Programming

## Community Based

- IHBT Treatment Teams
  - IHBT, MST, FFT
- Intensive Family Support Program
- Outpatient Counseling
- Somali Outreach Program

## Educational Services

- Bonner Academy Day Treatment
- School based Counseling

## Integrated Care

- Care Management Entity
  - Care Coordination
- Same Day Access
- Medication Management

